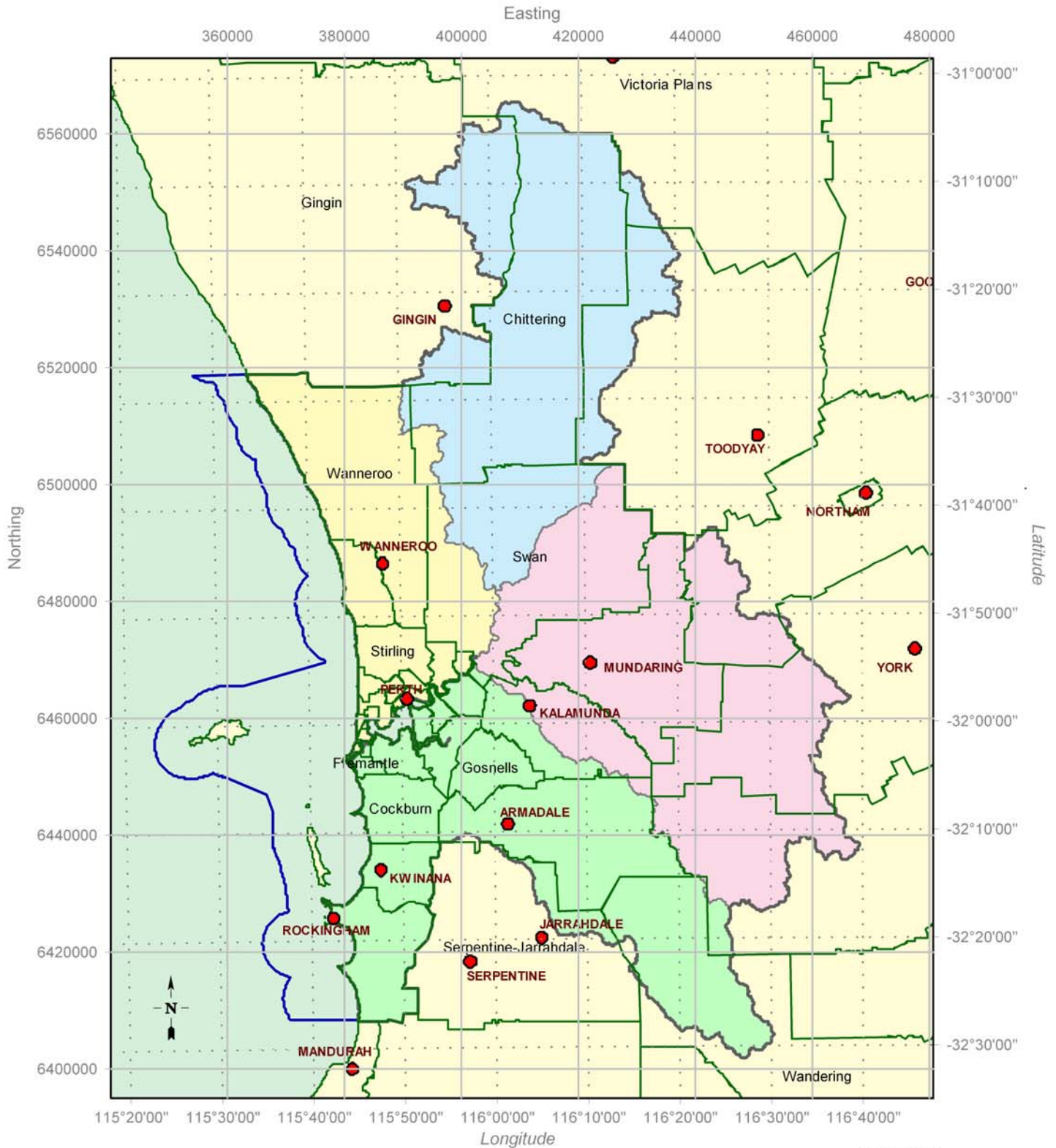


# Swan Catchment Council - Natural Resource Management Area



## LEGEND

- |  |   |
|--|---|
| <span style="display:inline-block; width:15px; height:15px; background-color:red; border:1px solid black;"></span> Major Towns                         | <span style="display:inline-block; width:15px; height:15px; background-color:yellow; border:1px solid black;"></span> North         |
| <span style="display:inline-block; width:15px; height:15px; background-color:lightgreen; border:1px solid black;"></span> Local Government Authorities | <span style="display:inline-block; width:15px; height:15px; background-color:lightblue; border:1px solid black;"></span> North East |
| <span style="display:inline-block; width:15px; height:15px; border:1px solid black;"></span> Swan Region   | <span style="display:inline-block; width:15px; height:15px; background-color:lightgreen; border:1px solid black;"></span> South     |
| <span style="display:inline-block; width:15px; height:15px; background-color:pink; border:1px solid black;"></span> East                               | <span style="display:inline-block; width:15px; height:15px; border:2px solid blue;"></span> Coastal and Marine                      |

Datum: Geocentric Datum of Australia 1994  
Grid: Map Grid of Australia Zone 50

While all reasonable care has been taken in the preparation of the material in this document, Swan Catchment Council accepts no responsibility for any inaccuracies and persons relying on this data do so at their own risk.

## LOCALITY MAP

