

FESA BUSHFIRE AND LOCAL GOVERNMENT RELATIONS BRANCH

BUSHFIRE MITIGATION PROGRAM



Kathy Nastov
Bushfire Mitigation Officer



Priorities....

Protection of life, property and
environment from the threat of bushfire



Reducing the risk of bushfire events on communities by....

- Identifying risk, Assessing risk and Selecting suitable treatments
- Conducting and coordinating bushfire mitigation treatments



Bushfire Mitigation Officers Responsibilities

- Facilitate the development of tenure blind Community Bushfire Risk Mitigation Plans
- Mitigate risk of bushfire from UCL/UMR within towns
- Provide advice to and assist LG's with mitigation planning and activities
- Maintain records of all assessments and treatments in the Integrated Bushfire Risk Management System
- Liaise with LGA's, local fire brigades, DEC and other responsible agencies
- Engage the community on bushfire risk mitigation programs in collaboration with DEC and other agencies



Reducing fuel availability to decrease fire intensity through:

Mechanical methods:

- Slashing
- Mulching
- Parkland clearing
- Grading/dozing

Chemical methods:

- Weed control



Hazard reduction burning

- Low intensity burning under prescribed conditions to achieve set objective
- Intensity, rate of spread, flame and scorch height are all controlled
- Reduced scorch heights result in minimal environmental impact



Process:

- Undertake fuel load assessments
- Prepare burn prescriptions
- Prepare pre burn checklists
- Prepare smoke management guidelines
- Complete Environmentally Sensitive Areas (ESA) and Cultural Heritage checks





3 YEAR 6 SEASON PRESCRIBED BURN PLAN

This 2008 strategic hazard reduction plan may be modified without notice.

This plan contains major hazard reduction burns programmed for Autumn, Winter and Spring within the <<Name of Shire>>. The plan is not necessarily for a three year period, but rather for a broad direction.

Aim: The aim of the plan is to provide for the co-ordinated prevention and mitigation of bushfires for the protection of life, property and the environment.

Objective: The objective of the plan is to:

- reduce the risk of bushfire damage of life, property and the environment
- Minimise the risk to the safety of fire fighters and the public by reducing the potential for severe bushfires
- Manage the impact of bushfire smoke on the community
- Manage fires for the protection and conservation of the natural, cultural, scenic and recreational features of the area.

Strategy: this is achieved through addressing the factors that comprise the risk. That is, the bushfire hazard (principally the fuel), the sources and pattern of ignitions and vulnerability of the assets at risk.

| RESERVE | JUSTIFICATION | ANTICIPATED DATE OF COMPLETION |
|------------------------------------|--|--------------------------------|
| Lake Leschenaultia Reserve 23165 | Priority Hazard Reduction Burn Leschenaultia Conservation Park and Lake Leschenaultia Public Leisure Facilities There is a very high level of fuel in the Park surrounding the Lake. The risk of a bushfire is high and the risk to community assets, ecological and environmental assets is high. The reduction of fuel in the park is therefore a priority. Recommendation: Mosaic hazard reduction in a 6/8 year rotation. | 2009 |
| Reserve 6203 Thomas Street Chidlow | This Reserve is adjacent to Chidlow Township, south of Thomas Street. It poses a threat to the Township and reduction of fuel loads will decrease the rate of spread of and intensity of a fire, not only towards the township but also towards wooded areas to the west of the reserve and bushland to the east across Old Northam Road. | 2009 |



3 YEAR 6 SEASON PRESCRIBED BURN PLAN

| RESERVE | JUSTIFICATION | ANTICIPATED DATE OF COMPLETION |
|---|---|--------------------------------|
| Reserve 4967 Mt Helena/Chidlow | Chidlow and Mt Helena Reserve – Due to heavy fuel loads this reserve poses a significant threat to the townsites of Chidlow and Mt Helena and surrounding developments of Forge Way and Warrigal way, Chidlow and Whitlam St and Firth St, Mt Helena. | 2009 |
| Reserve 4967 Liberton Road, Jordan Road Chidlow | This Reserve has high level fuel loads. It poses a threat to rural and residential properties to the west and south and also to properties in Warrigal Way. Reduction of the fuel will slow the rate of spread and intensity of a fire. | 2009 |
| Reserve 23165 Rosedale Road Chidlow | Rosedale Road Reserve This reserve bounded to the north by forested area and rural properties. To the east is the Leschenaultia Conservation Park. The level of fuel on the ground could pose a threat to the townships of Mt Helena and Chidlow and reduction would significantly reduce that threat of a bushfire impacting on the community. | 2010 |
| Reserve 30667 Doconning Road Beechina Nature Reserve Beechina | This Reserve is bounded by residential properties in Leyland Close, Simmons St and Lockwood St. Reducing the fuel load by a hazard reduction burn will lower the intensity therefore lower the risk to the communities | 2010 |
| Reserves 17100, 4967 Warrigal Way Chidlow | These reserves surround the residential development situated on Warrigal Way. The reduction of fuel would reduce the threat to properties to the north and east of this community. The reduction of fuel load will provide a buffer to inhibit the spread of fire to the south of the residential development in Warrigal Way | 2011 |

- Based on Aerial Photos
- Allows for initial identification, assessment, and planning for treatment of risk and identification of gaps in mitigation programs
- Identification of bushfire risk areas based upon the Bushfire Threat Analysis
- Utilised to plan, map and record mitigation works such as firebreaks, mulching, slashing and hazard reduction burning



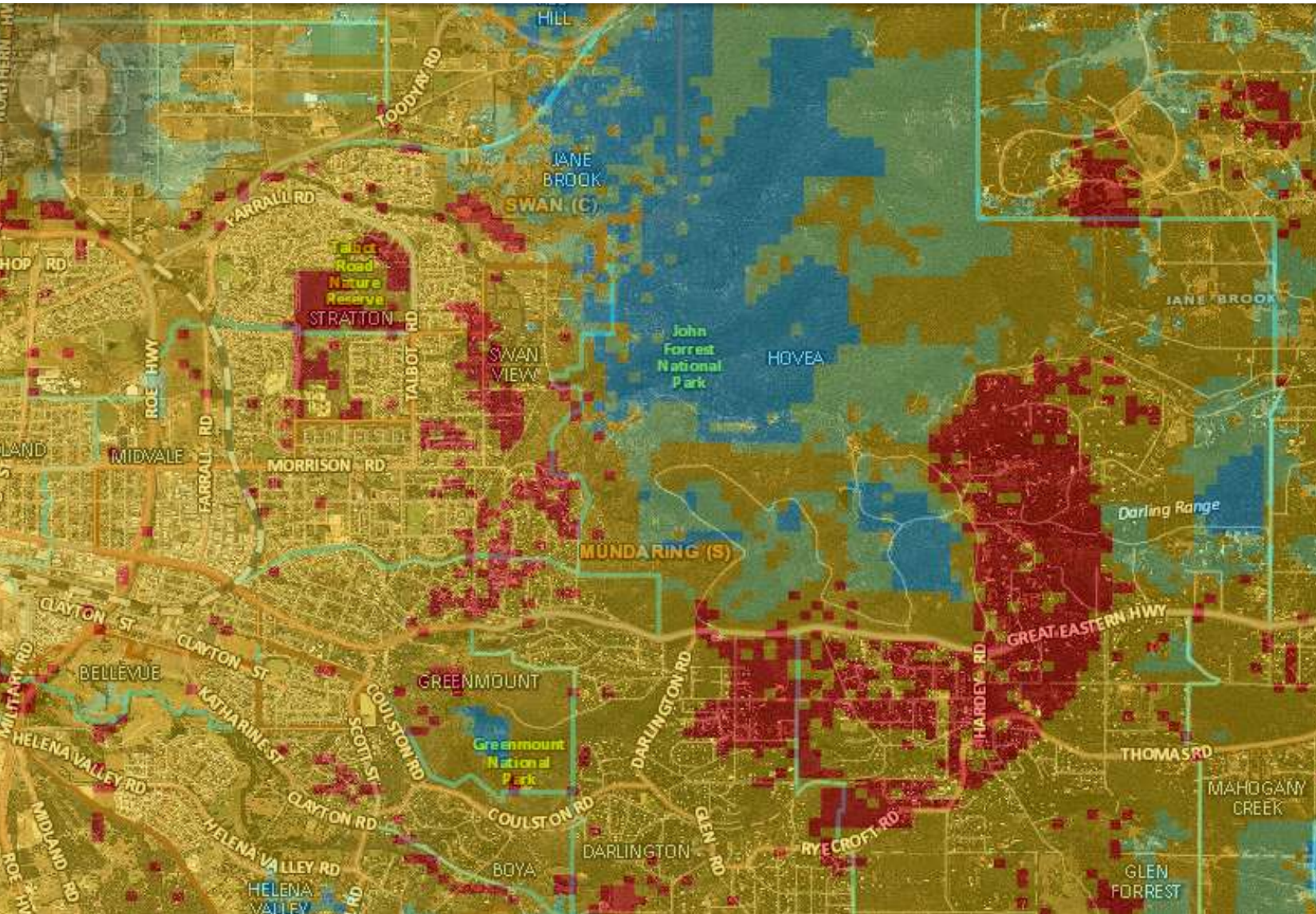
Integrated Bushfire Risk Management System



- Based upon risk modelling that considers likelihood and consequence of a bushfire occurring.
- Likelihood is determined by assessing:
 - Ignition Risk,
 - Suppression Response, and
 - Potential Fire Behaviour
- Consequence is determined by assessing:
 - People
 - Infrastructure and Property
 - Production
 - Biodiversity
 - Conservation
 - Recreation
- Utilised to prioritise the implementation of bushfire risk management programs through IBRMS.



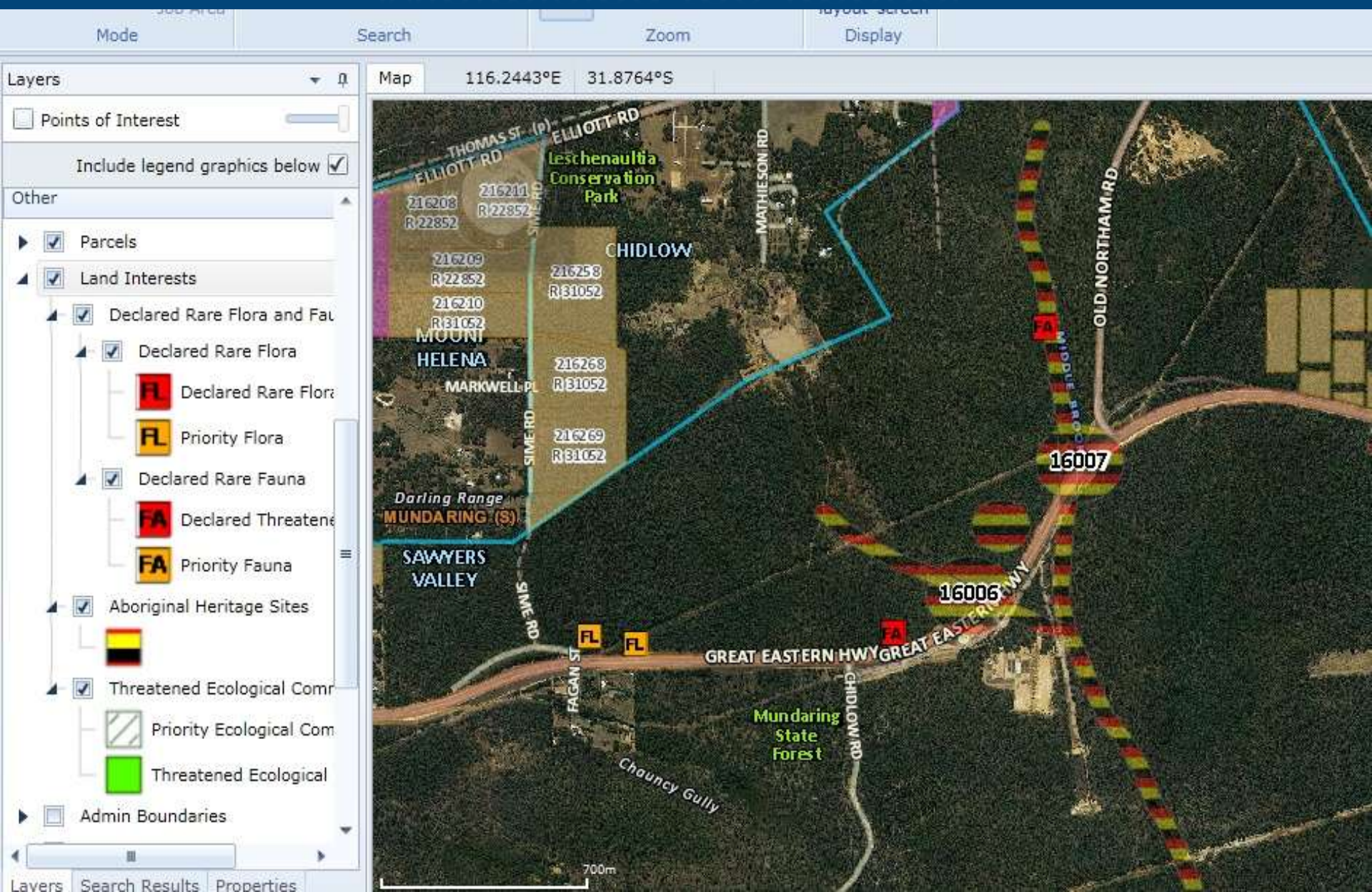
Bushfire Threat Analysis



- Environmental sensitivities and cultural heritage checks
- Environmental approvals process (internal)
- Cultural heritage process
- Liaison- community, friends groups, LG's and indigenous community



Minimising the Impact



Any Questions?

