

information sheet

03

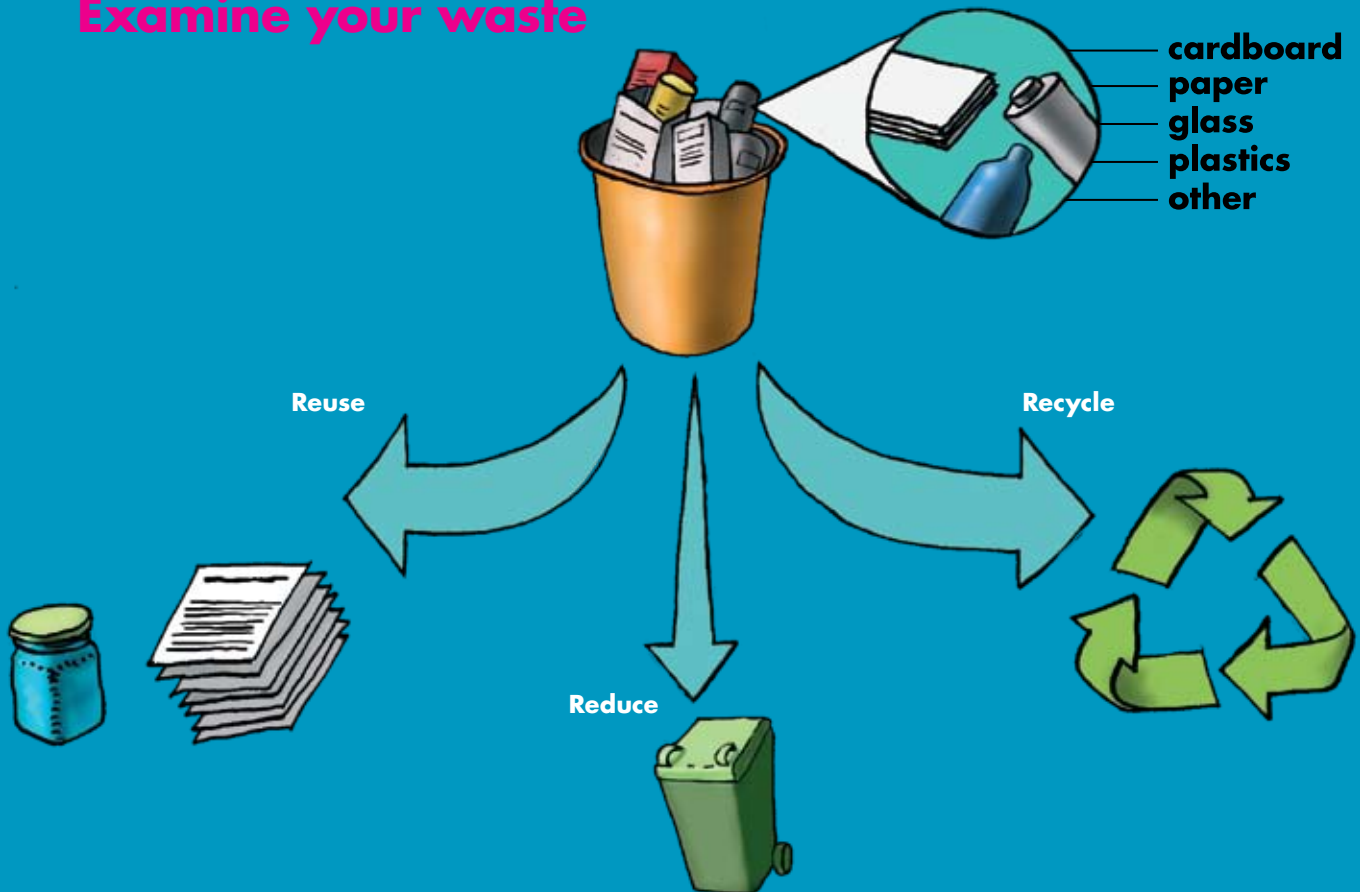
WASTE MANAGEMENT



WA is producing too much waste...



Examine your waste



As a result

The WA Government has set a vision that as a community we move toward Zero Waste in Western Australia

What can you do to minimise waste?

Waste disposal is costly. Look at your operations to see where you can reduce waste and save money.

Check and identify:

- waste types.
- where from and how much waste.
- cost of waste disposal.

Waste can be reduced by checking:

- raw materials used.
- work practices.
- equipment and production processes.
- re-use of materials.
- recycling opportunities.

Smarter purchasing, less packaging, less waste

- Tell your supplier that you want items with less or no packaging.
- Ask your suppliers to take back the waste they have passed on to you or find one that will.
- Ask your suppliers to deliver products in returnable packaging.

Recycling

Recycling companies offer commercial services for recycling:

- glass.
- aluminium.
- plastic.
- paper and cardboard.
- scrap metal.
- and many other waste products.

These companies can also give advice and provide storage bins suitable for your business.

Storing wastes on-site

Wastes kept on-site must be stored securely:

- in designated areas.
- under cover.
- away from stormwater drains.

Liquid waste storage areas must be bunded.

Any waste that enters the stormwater system causes pollution, and you could face a fine.

For more information:

Check out other Information Sheets in this series.

Yellow Pages under:

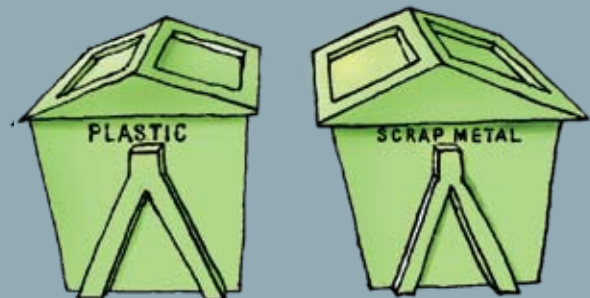
- Recycling Services.
- Waste Reduction & Disposal Services.
- Waste Management Consultants.

Or call:

- Department of Environment and Conservation on telephone (08) 6467 5000.
- Your Local Council.

Your waste should be:

- **Categorised**
- **Labelled**
- **Stored**



These information sheets have been produced by Perth Region NRM in consultation with our partners.
Call (08) 9374 3333 or check out our website at www.perthregionnrm.com



©Copyright: Copyright of this material is owned by Perth Region NRM. Apart from fair dealing for the purpose of private study, research, criticism or review; and as permitted under relevant copyright legislation; no part may be reproduced or used for any commercial purposes whatsoever. However, in keeping with Perth Region NRM's commitment to encourage the availability, dissemination and exchange of information, you are welcome to reproduce this material for personal, in-house or non-commercial use, without obtaining formal permission of Perth Region NRM and without charge, providing the source is acknowledged.

Disclaimer: These materials are provided voluntarily by Perth Region NRM as a public service. The information contained in them is provided for general guidance. Whilst the information is intended to be of general assistance, it is not intended as, and should not be relied upon as, professional advice to any person or organisation. You should make your own inquiries as to the appropriateness and suitability of the information for your particular circumstances. Although Perth Region NRM has made every effort to ensure that the material provided is complete, current, reliable and free from error, neither Perth Region NRM nor any of its officers, employees or volunteers warrant or make any other representation about the accuracy, adequacy or completeness of the information.