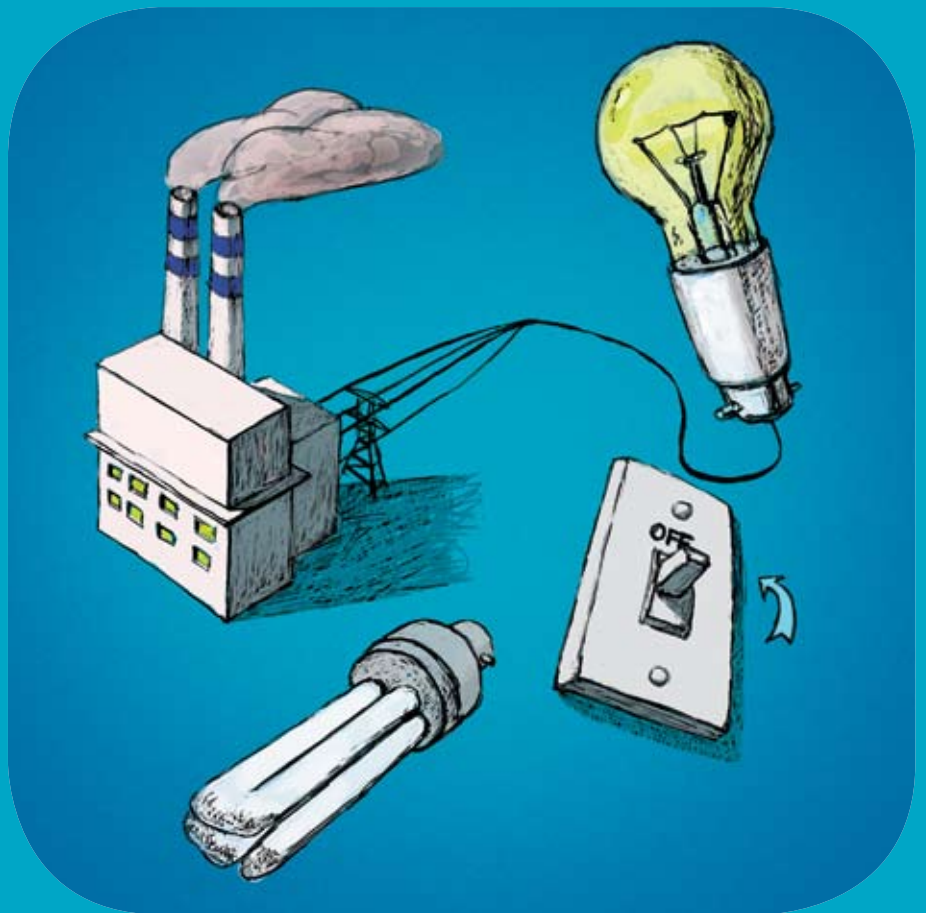


ENERGY CONSUMPTION

information sheet 09

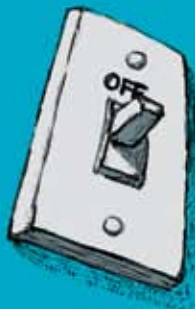


Energy consumption key points

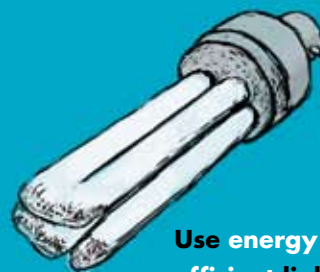
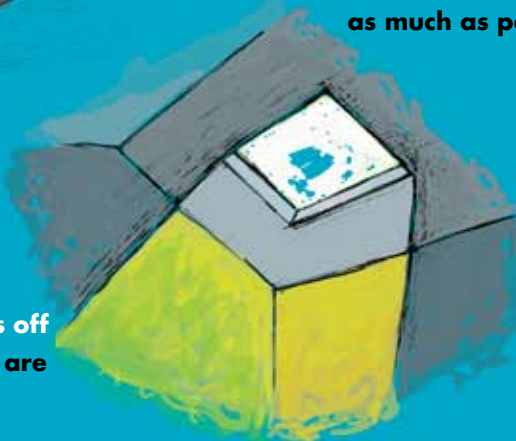
Reducing your energy consumption not only helps the environment—it saves you money.



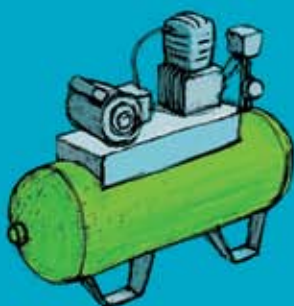
**Use natural lighting
as much as possible.**



**Turn the lights off
in rooms that are
not in use.**



**Use energy
efficient lights.**

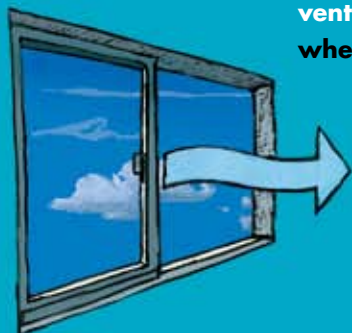


**Minimise the use
of machinery such
as air compressors:
switch the device off
when it's not in use.**

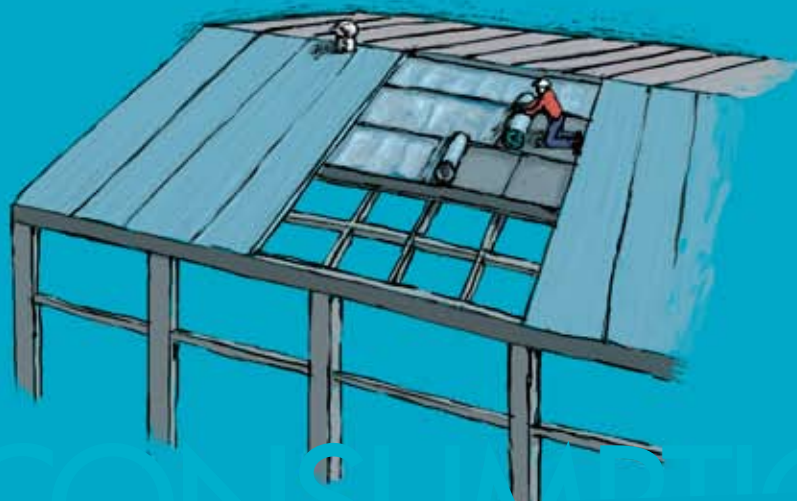


**Air conditioners
should be set
to 25-26° or
the highest
comfortable
temperature.**

**Use natural
ventilation
wherever possible.**



**Use effective
insulation on
roofing and
in ceilings.**



To help reduce the amount of energy your business uses and the contribution to climate change, there are a number of easy measures you can take. Start by checking how much energy your business operations use and consider the following energy saving measures. These will also save your business money.

Lighting

Good lighting design and careful use can save up to 75% of your lighting costs.

- Turn lights off when not in use, such as in toilets.
- Use natural lighting where possible, eg. open blinds and curtains, and use sky lights.
- Install energy efficient globes. Compact fluorescents use 20% of the energy of standard globes.
- Use separate switches for various work areas.
- Use motion sensor switches for security lighting or areas not often used.
- Use reflective surfaces that direct light to where it is needed.

Heating and Cooling

Your heating and cooling systems should be appropriate for the task.

- Use natural ventilation where possible.
- Keep doors and windows closed when heating or cooling an area.
- Air conditions should be set at 25-27°C or the highest comfortable temperature.
- Heater thermostats should be set at 19°C in offices and 16°C in workshops.
- Don't heat or cool unoccupied spaces.
- Use effective insulation on roofing and in ceilings.

Hot Water

- Consider the use of a solar heater or energy efficient water heater.
- Insulate hot water pipes.
- Set thermostat at a lower temperature.
- Checks regularly for any leaks.

Motors

Electric motors used in Australia's industrial and commercial businesses account for roughly 28% of the country's electricity use.

- Minimise use – switch equipment off when not being used.
- Purchase motors that are suited for their intended tasks – bigger is not always better.
- Shop around and purchase energy efficient motors and equipment.
- Use variable speed drives (VSDs) which automatically vary motor speeds for efficient operation of pumps, fans, cooling systems etc.

Air Compressors

- Minimise the use of compressors. For example, use a broom instead of compressed air for cleaning.
- Turn off when not being used.
- Check air lines regularly for leaks.
- Reduce air pressure to the lowest pressure required.
- Place compressors in a well ventilated area (cooler intake air is better).
- Make sure the size of your compressor meets your needs (i.e. it should not be too big).

Workplace Design

- Where possible ensure that your work layout takes advantage of natural lighting and ventilation.
- Consider operational efficiency when designing your workplace layout.

Other Ideas

- Reduce transport requirements by using local businesses wherever possible.
- Choose the right vehicle for the job and factor in running costs over the life of the vehicle.
- Consider lower emission vehicles.
- Ensure vehicles are well maintained and serviced regularly.
- Switch to accredited Green Power or Natural Power through your electricity supplier to reduce greenhouse gas emissions.
- Consider a professional energy audit.
- Get all staff involved in energy efficiency measures.

Check out other Information Sheets in this series.

These information sheets have been produced by Perth Region NRM in consultation with our partners.
Call (08) 9374 3333 or check out our website at www.perthregionnrm.com



©Copyright: Copyright of this material is owned by Perth Region NRM. Apart from :fair dealing for the purpose of private study, research, criticism or review; and as permitted under relevant copyright legislation; no part may be reproduced or used for any commercial purposes whatsoever. However, in keeping with Perth Region NRM's commitment to encourage the availability, dissemination and exchange of information, you are welcome to reproduce this material for personal, in-house or non-commercial use, without obtaining formal permission of Perth Region NRM and without charge, providing the source is acknowledged.

Disclaimer: These materials are provided voluntarily by Perth Region NRM as a public service. The information contained in them is provided for general guidance. Whilst the information is intended to be of general assistance, it is not intended as, and should not be relied upon as, professional advice to any person or organisation. You should make your own inquiries as to the appropriateness and suitability of the information for your particular circumstances. Although Perth Region NRM has made every effort to ensure that the material provided is complete, current, reliable and free from error, neither Perth Region NRM nor any of its officers, employees or volunteers warrant or make any other representation about the accuracy, adequacy or completeness of the information.