



Annual Report 2008

IN FOCUS



Perth Region
NRM

Contents

Message from the Chairman	2
Perth Region NRM	4
Membership	5
The Perth Region.	8
Regional Programs	9
Integrated Water Management Program	10
Natural Diversity Program	16
Sustainable Production Program	20
Coast and Marine Program	22
Indigenous Cultural Heritage Program	28
Local Government Liaison Program.	30
Monitoring and Evaluation	32
Partnerships	
The Swan Alcoa Landcare Program (SALP).	33
Sub Regional Forums	34
2006-2008 Investment Plan	34
Achievements	
Fishing Line Recovery and Education Project.	36
Eco-study launch for wineries	37
Aboriginal Cultural Heritage Management Plan	38
NRM Success Stories	38
Swan Alcoa Landcare Program Funding Ceremony	39
Swan NRM Environmental Weed Project	40
To The Future	41
Governance.	41
Audited Financial Report	42



Message from the Chairman



The past twelve months have been a period of many changes that have impacted on the operations of Perth Region NRM, not the least of which have been changes of government at both the Federal and State levels.

A major change in Australian Government funding arrangements for Regional Natural Resource Management occurred in November with the election of a new government in Canberra. In the months leading up to the November Federal election, Perth Region NRM had started preparing the groundwork for the development of projects for Round 3 of the Natural Heritage Trust (NHT3) for commencement on July 1st 2008.

However, the NHT3 agreement was not able to be signed before the election and was abandoned by the incoming government. It is worth noting at this point that Perth Region NRM completed all but one of its NHT2 projects on time and on budget by the close of the Program on June 30th 2008. A marine project, which started six months later than the other NHT2 projects, remains to be completed by June 2009.

In January 2008 the new Australian government announced a new funding model for Regional NRM called 'Caring for our Country'. The new program contained a number of new elements including a list of national priority targets, direct core funding to the 56 Regional NRM Groups throughout Australia, a longer term program from 2009 to 2013 and a contestable bidding process to access project funding beyond July 2009.

I believe that Perth Region NRM is well placed to access funds in the Caring for our Country (CfoC) contestable bidding process and I know that the administrative staff have worked very hard in the last

eight months developing projects for submission to CfoC under difficult and frequently changing circumstances.

In November 2008 the Australian Government will publish its business plan for CfoC and provide greater details about its National Priority Targets and it is expected that applications for funding will need to be submitted by January 2009.

At the state level the relationship between the six Regional NRM Groups and the State Government is in a state of flux. Good progress was being made with the previous government prior to the September election about the roles and responsibilities of the Regional NRM Groups who have identified their major roles as:

- the coordination of the NRM effort within their regions
- community capacity building
- the sharing of knowledge and information about NRM issues within their regions
- NRM project delivery within their regions

In order to secure future State Government funding the NRM Regions will need to provide evidence that the Regional NRM model is both cost effective and efficient and to that end the six WA Regions have collectively initiated the development of a business plan to be presented to government in early 2009. Until the NRM policies of the new State Government are announced the issue of State funding of Regional NRM Groups will remain uncertain.

The last twelve months have also seen the development of closer ties between the six Regional NRM Groups in WA with the signing of a Memorandum of Understanding in which the six

In January 2008 the new Australian government announced a new funding model for Regional NRM called 'Caring for our Country'

Groups have agreed to work together more closely on matters of common interest such as shared services and advocacy for the Regional Model. It is hoped that in the near future it may be possible, depending on the availability of funding, to appoint an Executive Officer to put into effect the objectives of the Memorandum.

Closer ties between the Regional NRM Groups have also been forged through the State NRM Council which has been meeting since November 2007 and on which the Regional Group Chairs make up the majority membership. During the past year the Regional Chairs have also held regular meetings with the six members of CONRACE (Council of Natural Resource Agency Chief Executives) which has helped the Regions develop a shared understanding and a common position on many NRM issues.

In July 2008 CONRACE presented a Draft State NRM Plan with the provision of a three month period in which stakeholders were invited to comment. When the final version of the Plan is published it is hoped that it will be followed by a State NRM Strategy and Investment Framework.

One of the continuing strengths of Perth Region NRM is the advice and guidance provided by the twelve Reference Groups which have met on a regular basis throughout the year. I acknowledge the time and commitment provided by all members of our Reference Groups and thank them for their valuable contribution to the ongoing success of Perth Region NRM. The five Sub-Regional forums that were established in 2007 became Sub-Regional Reference Groups in early 2008 and provide an excellent forum for local government environmental officers and representatives of community groups to meet and discuss NRM issues of common interest within the sub-region and to provide strategic advice on NRM issues.

Closer ties between the Regional NRM Groups have also been forged through the State NRM Council

I would also like to thank all members of the Board of Perth Region NRM for their contributions and support over the last twelve months and look forward to their continued commitment in the future.

Finally, I would like to acknowledge the hard work and dedication of the administrative staff of Perth Region NRM under the leadership of Linda Soteriou. This year has proven to be a difficult and trying work environment in which the 'rules of the game' have changed frequently, often at very short notice.

Let us hope that the next twelve months will bring more certainty and greater stability for natural resource management and that we can focus all of our efforts on caring for our environment.



Colin Heinzman
Chairman
Perth Region NRM



Perth Region NRM

Perth Region NRM (formally the Swan Catchment Council) is a community-led regional group responsible for coordinating and delivering natural resource management (NRM) in the Perth Region.

It addresses community needs by working closely with government agencies, industry, community and catchment groups and other bodies to promote collaboration on key environmental issues.

As one of 56 groups from around Australia, Perth Region NRM is helping to achieve a nation-wide approach to managing and restoring our environment.

The core objectives of Perth Region NRM are to:

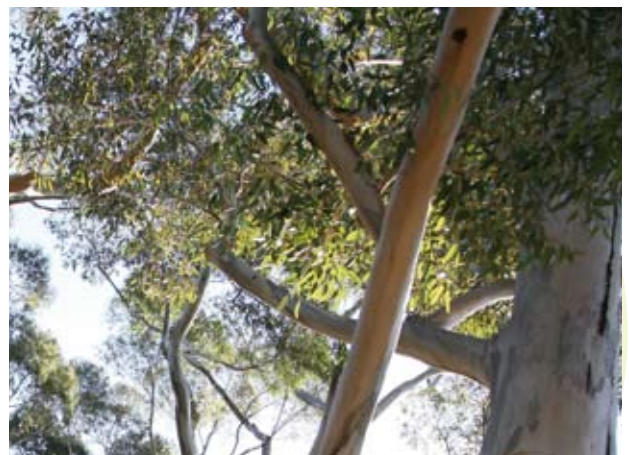
- Conserve the Region's Biodiversity
- Promote sustainable use and management of the Region's resources

- Provide support for individuals, landholders, industry and community members in NRM
- Increase understanding of NRM issues in community, government and industry
- Influence government policy on NRM and related issues

Perth Region NRM's legal constitution is that of an incorporated association.

Perth Region NRM received funding through NHT2 in 2007-2008 which is an Australian Federal Government and Western Australia State Government initiative.

In 2008-2009, Perth Region NRM received funding through Caring for our Country with ongoing funding through to 2013.





Membership

The membership of Perth Region NRM reflects the diverse stakeholders in the Perth NRM Region, which is amongst the most populous NRM regions in Australia. Membership includes Local and State Government, community, indigenous and corporate stakeholders. The major NRM agencies also have membership (Departments of Water, Environment and Conservation, Planning and Infrastructure, Agriculture and Food, and Fisheries). The Water Corporation and WALGA are also represented.

Geographical representation is provided by the five community members representing the five sub-regions of the Perth Region:

- Coastal Reference Group
- East Reference Group
- South Reference Group
- North Reference Group
- North East Reference Group

Expertise is provided through the seven theme based Reference Groups:

- Integrated Water Management

- Natural Diversity
- Light Industry
- Rural Landuse
- Marine
- Indigenous NRM Advisory Group
- Local Government

Each Reference Group is comprised of approximately 10-14 members, drawn from State and Local Government, non-government organisations, research institutions, industry and community, and are chaired by community members.

Local Government representatives sit on each Reference Group and form the membership of the Local Government Reference Group.

Reference groups have a key role in advising the Council on the progress of its programs, in developing Investment Plans and in forming partnership opportunities.

A brief profile of current Council members is provided on Pages 6 and 7.



Membership



Colin Heinzman, Chairman and Chair, Natural Diversity Reference Group

Colin Heinzman is the secretary of the Friends of Attadale Foreshore, a voluntary environmental group restoring and rehabilitating the Attadale foreshore from Point Walter to Point Waylen. Colin is chairperson of the Natural Diversity Reference Group and has a long-standing interest in the conservation of native animals, particularly fish and birds.



Robert Hawes, Chair, North-East Reference Group

A farmer at Wannamal in the Shire of Chittering for over 20 years, Robert Hawes has also been an active member of Wannamal Lakes Catchment Group since its inception in 1997



Stuart Knott, Chair, Coastal Reference Group

Stuart Knott was inaugural chair of Cambridge Coastcare, is still a committee member and represents Perth Region NRM on the Coastal Planning Strategy Steering Committee.

Stuart runs his own consulting company specialising in strategic business and marketing plans, government liaison and funding applications.



David Ellement, Chair, Rural Landuse Reference Group

David Ellement has a family background in vegetable growing that goes back three generations. He has been representing vegetable growers for ten years, is very familiar with issues affecting the industry Australia-wide and believes the question of long term sustainability is vital to the industry's future. The way to achieve this is by industry and the community working together to achieve best practice.



Dr Beth Walker, Chair, Light Industry Reference Group

Dr Beth Walker is the current Director of the Small and Medium Enterprise Research Centre (SMERC) and Professor of Business Enterprise in the School of Management at Edith Cowan University.



Beverley Rebbeck, Chair, Indigenous NRM Advisory Group

Since 2000, Beverley has worked with the Department of Indigenous Affairs (DIA), Metropolitan / Wheatbelt Region as a regional officer. Her role with DIA is to increase understanding of current priorities in national and state Indigenous Affairs policy and implement DIA priorities in whole-of-government coordination. As part of her duties, Beverley also promotes social and economic initiatives for Aboriginal people and communities.



Cr David Boothman, WALGA State Council representative

David Boothman has been a councillor with the City of Stirling since 1994 and was elected Mayor in 2007. He retired from the WA Police in 2007 having served for over 33 years. David has had a strong focus on the environment and sustainability during his time on Council and is the representative of WALGA on the board of Perth Region NRM.



Cr Clive Robartson, Chair, Local Government Reference Group

Clive Robartson OAM LGM is a councillor at the City of Melville. Clive's local government involvement extends beyond the City of Melville. He has been a long-term member and chairman of the Southern Metropolitan Regional Council. He is the immediate past president and life member of the WA Local Government Association and during his term of office was a director of the Australian Local Government Association. Prior to retiring he was the Laboratory Manager of the Animal Health Laboratories, Dept. Agriculture and Food WA.



Alan Sands, Department of Environment and Conservation

Alan Sands is Acting Director of Environmental Regulation Division and has been Regional Manager of the Swan Region for the Department of Environment and Conservation since 2002. Alan has more than 10 years experience as the manager of multi-disciplinary work groups, and has a professional background in landscape architecture and natural resource management. His focus is to work with agency staff and the broader conservation community to plan and implement strategies that protect and enhance the value of natural lands.



Jamie Bowyer, Department of Agriculture and Food

Jamie Bowyer is a senior development officer with the Department of Agriculture and Food WA. He is based at South Perth and works in the 'Extension and Communication' project within the Natural Resource Management Division. His work includes building the extension, evaluation and communication capacity of the NRM division. He also evaluates projects within the division to gain to identify the impact of projects and to inform development of new projects. He has been involved in sustainable agriculture in a number of roles for 12 years.



Ross Sheridan, Department of Water

Ross Sheridan is the regional manager for the Department of Water's Swan - Avon, and Goldfields Region. He has been working in the water industry for more than 30 years with roles in water resource measurement, water allocation planning and water source protection in both operational and policy areas. He is qualified as a hydrogeologist and a hydrographer.



Sally Lake, Chair, North Reference Group

Sally Lake is a member of the Claise Brook Catchment Group and has been actively involved in projects to improve water quality and habitat within the inner city for 8 years.



Dr Robert Humphries, Water Corporation

Bob is a systems ecologist with interests in the behaviour and management of complex systems. He has worked as a university research fellow, as an environmental consultant, and in research and policy roles in the Western Australian EPA and the Australian water industry. Bob has worked on the restoration of degraded catchments and waterways for much of his career and has been working with the WA Water Corporation for the last 12 years.

He is currently the Manager of Sustainability for the WA Water Corporation with the job of embedding the necessary thinking patterns and the practical pursuit of sustainability thinking into the culture and work practices of the Corporation.



David Saunders, Department for Planning and Infrastructure

David is the Director State Strategic Policy at the Department for Planning and Infrastructure, responsible for coastal planning and climate change, resource protection & management, land use policy, integrated planning and infrastructure planning policy.



John Beaton, Chair, East Reference Group

John is a past President of the Shire of Mundaring and Chair of the EMRC.

John is dedicated to getting work done at the grass roots of environmental issues on a catchment-wide basis and this is one of the key reasons for his involvement in Perth Region NRM. John represents the North East region on the Perth Region NRM Board.



Pat Hart, Chair, South Reference Group

Pat Hart is Chairperson of the South East Centre for Urban Landcare, Councillor City of Armadale, Board Member Botanic Parks and Garden Authority, Secretary of Armadale-Gosnells Landcare and Chairperson South East Regional Energy Group. Any spare time is spent working on her rural property in Roleystone.



Dave Deeley, Chair, Integrated Water Management Reference Group

Managing Director of ASE, Dr Deeley is a Landscape Ecologist with 30 years continuous experience with NRM issues in Western Australia. He has led teams undertaking a range of environmental assessment and management projects locally both in government and the private sector and has developed and delivered training packages for professionals in a number of discipline areas.



Glenn Hyndes, Chair, Marine Reference Group

Glenn Hyndes is an Associate Professor at Edith Cowan University. Glenn's research interests are broad and focus on various aspects of marine ecology in coastal environments, with a particular focus on seagrass meadows and surf-zone regions. Glenn's most recent research is exploring the connectivity among habitats, which can occur through the movement of animals between habitats for foraging, or the transport of nutrients and plant material that can enhance production in other areas.

Regional Programs

The *Swan Region Strategy for Natural Resource Management* (the Strategy) is implemented through six Programs:

- Integrated Water Management;
- Natural Diversity;
- Sustainable Production;
- Coast and Marine;
- Indigenous Cultural Heritage, and
- Local Government.

The following chapter outlines the projects these Programs have completed in the last financial year, as well as providing a summary of the entire NHT2 funded projects that were complete June 30, 2008.



Integrated Water Management Program

The Integrated Water Management Program comprised of eleven projects.

Swan-Canning Foreshore Assessment

This project was delivered by the Swan River Trust. A comprehensive foreshore assessment has been carried out across the Swan-Canning River System assessing the biophysical characteristics of the foreshore, including: the vegetation composition and condition; spatial extent and pattern of pressure indicators; extent of current management responses; hydrodynamics; shoreline morphology and vulnerability; erosion features and processes; and location, condition and effect of drainage outlets.

The results of this project have been used for the development of the Swan and Canning Rivers Foreshore Assessment and Management Strategy (2008) which summarises the foreshore issues, defines management responses and identifies priorities for action. The Strategy is intended as a guide for land management to target their foreshore investment to priority areas. This information also provides a baseline for further monitoring and evaluation of foreshore condition and the effectiveness of rehabilitation effort.

Swan-Canning Tributary Foreshore Assessment

The Swan-Canning Tributary Foreshore Assessment Project was delivered by the Department of Water and the Swan River Trust. The aim of the project was to capture a “snap-shot” of the condition of 37 major tributaries in the Swan Canning catchment. It involved a multi-method approach including literature and existing data review, desktop and field assessments and consultation.

The project has supported the development of river restoration priorities through foreshore assessments and categorisation of risks to riverine values. It has identified foreshore issues such as significant erosion, weed infestations, revegetation and weed management work. As a result of this work, restoration priorities have been determined with recommendations for remedial actions to assist land managers to guide investment to areas of highest priority. To this end, an interactive GIS tool containing the findings of the project has been developed that has been made available to land managers.

Water Quality Monitoring and Evaluation Framework

The objective of this project was to implement a coherent water quality monitoring and evaluation program across the Region encompassing catchments, the Swan River estuary and the near-shore coastal zone. This project builds on work initiated in 2005/06 and aimed to establish baseline water quality monitoring programs as a precursor to setting resource condition targets for water and marine.

This was achieved by re-focusing existing monitoring programs, establishing new catchment monitoring investigations and promoting the standardisation of all data collection, storage and reporting methods. In addition, biotic indicators of river health were investigated with additional sampling sites established.

Much work has been done to promote the standardisation and coordination of water monitoring across the region. This includes:

- 23 water quality monitoring programs were created to help community groups and LGA's assess waterway health and to identify hotspots;
- Web-based reporting and assessment of monitoring results were developed ready for launching on the internet;

- Quality controlled water quality data deposited in a centralised database accessible to the public;
- Guidelines published on the web for designing monitoring programs, sampling water quality and providing standard operating procedures.

This project also developed and trialled methodology for assessing River Health in WA. This included:

- Undertaking trials of different indicators;
- Developing and assessing reporting methods;
- Development of a trial report card for one sub-catchment;
- Production of a manual for the River Health Assessment Scheme;
- Development of a proposed monitoring program for the setting of regional targets in future.

This project also undertook the development of a Seagrass Monitoring Program in order to set targets for seagrass distribution/depth range in the future. A fish community index was also developed for the setting of targets in the future.

Water Quality Partnership Project

The aim of this project is to promote a cooperative approach to water quality monitoring activities across the Perth Region and take advantage of partnerships already established in the 2005/06 period. More specifically, this project assisted stakeholders such as local government to assess their water quality data requirements and provided assistance to prepare sampling and analysis plans, undertake actual sampling activities and in the preparation of reports in conjunction with the Department of Water.



The following monitoring programs were established and progress detailed:

Bassendean (three main drains). Partnership with Town of Bassendean. Four sampling events from June – December 2007, 8 sites, residential and industrial contaminants and nutrients. 2007 program completed, final report forwarded to stakeholders.

Bayswater Main Drain. Partnership with City of Bayswater. Snapshot event 2007, 24 sites, residential and industrial contaminants. 2007 program completed, final report forwarded to stakeholders.

Claisebrook Main Drain. Partnership with City of Perth, Town of Vincent and City of Stirling, in conjunction with Claise Brook Catchment Group (CBCG). Four sampling events from June – December 2007, residential and industrial contaminants. 2007 program completed, final report forwarded to stakeholders.

Bellevue Industrial area. Partnership with Perth Region NRM. Snapshot event 2007, 3 sites, industrial contaminants. 2007 program completed, final report forwarded to stakeholders.

Wangara sump. Partnership with City of Wanneroo. Bimonthly water quality monitoring from January – December 2007, 2 sites, industrial contaminants. 2007 program completed, final report forwarded to stakeholders, a further monthly sampling program commenced, 2008 (January-June) Sampling and Analysis Plan completed, three of three sampling events completed for (January – June) 2008.

Church St drain. Partnership with City of Wanneroo. Snapshot event, 3 sites, residential contaminants. 2006 program completed, final report forwarded to stakeholders.

Bennett Brook Catchment. Partnership with City of Bayswater, City of Swan and DPI (Whiteman Park), in conjunction with Friends of Lightning Swamp Bushland. Annual snapshot initiated 2002, 18 sites, residential and industrial contaminants. 2006 program completed, final report forwarded to stakeholders, 2007 program completed, final report forwarded to stakeholders.

Integrated Water Management Program

Lightning Swamp. Partnership with City of Bayswater and City of Swan, in conjunction with Friends of Lightning Swamp Bushland. Monthly monitoring program, initiated 2006. 4 sites, residential and industrial contaminants. 2006 program completed, final report forwarded to stakeholders.

Eric Singleton wetland. Partnership with City of Bayswater. Snapshot event, 4 sites, residential and industrial contaminants. 2007 program completed, final report forwarded to stakeholders.

Mounts Bay Main Drain. Partnership with City of Perth, Town of Cambridge, Town of Vincent in conjunction with Claisebrook Catchment Group. Development of Sampling and Analysis proposal completed.

Central and South Belmont Catchment. Partnership with City of Belmont. Annual Snapshot initiated 2005, 24 sites, residential, stables and industrial catchment. Sampling for 2007/08 completed in April. Data graphed and analysed. Report written and sent to DoW for comments. Waiting for City of Belmont comments to send on to Perth Region NRM for approval.

Town of Victoria Park Stormwater Drains. Partnership with Town of Victoria Park. Monthly Monitoring initiated 2006, 7 sites, recreational, industrial and residential catchment. Sampling for 2007/08 completed in April. Data graphed and analysed. Report written and sent for comments to Town of Victoria Park. Waiting for DOW comments to send to Perth Region NRM for approval.

Bickley Brook Catchment. Partnership with City of Gosnells. Annual Snapshot initiated 2006, with 10 sites, residential and industrial catchment. Three sites were added last year. Sampling for 2007 completed in November. Report written and sent for comments to DOW and City of Gosnells. Sent to Perth Region NRM for approval. SAP and budget for 2008 drafted.

Whaleback Lake. Partnership with City of Canning. Monitoring initiated 2007, 3 sites, industrial and residential sub catchment. Sampling for 2007 completed on October. Data graphed and analysed.

Helm St. Catchment. Partnership with Department of Water (DOW) and City of Gosnells. Monitoring initiated on 2007, 5 sites, semi-rural and residential catchment. Data graphed and analysed. Report written and sent for comments to DoW. Sent to Perth Region NRM for approval.

Ellis Brook Catchment. Partnership with Department of Water and City (DOW) of Gosnells. Monitoring initiated 2007, 5 sites, semi rural and residential catchment. Monitoring initiated on 2007, 5 sites, semi-rural and residential catchment. Report written and sent for comments to DoW. Sent to Perth Region NRM for approval.

Bickley Rd. Compensation Basin. Partnership with Notre Dame University, DOW and DOE. Notre Dame University student honours project. Water Quality monitoring at the compensation basin to help assess the restoration project undertaken. Fortnight monitoring, 2 sites. Report written and sent for comments to Notre Dame.

Upper Canning Catchment. Partnership with Department of Water. Monitoring initiated in 2007, 5 sites, semi-rural and residential catchment. Sampling for 2007 completed on October. Report written and sent for comments to DoW. Sent to Perth Region NRM for approval.

Bull Creek Catchment. Partnership with City of Melville and DOW. Monitoring initiated 2007, 12 sites, predominant residential catchment. Sampling started in July 2007. Sampling for 2007/08 completed in June. Data graphed and analysed. SAP and budget for 2008 drafted.

South Perth Catchment. Partnership with City of South Perth. Report written regarding the starting of a 'friends of group' workshop organised on April.

Superficial Aquifer Health Project

The Superficial Aquifer under Perth supports the irrigation of public open space by Local Government (LG) and schools (38 GL/yr); home garden irrigation (112 GL/yr); industry (31 GL/yr); households not on scheme supplies (26 GL/yr) and horticulture (90 GL/yr). Some of the 63 GL/yr of scheme supplies from the Superficial Aquifer also comes from under urban areas (Gwelup, West Mirrabooka, Whitfords, Quinns and Neerabup Wellfields). Recharge from the Superficial Aquifer to underlying confined aquifers also supplies over 100 GL/yr of water to all of the above users.

A Department of Environment report has indicated that the current monitoring of groundwater levels in the Aquifer is poorly known, but falling trends have been detected in several areas (R. Lindsay, Hydrogeology Report No, 225, 2004). An unpublished report of a larger urban area has indicated that groundwater trends cannot be estimated for almost half of the metropolitan area due to a lack of readily available monitoring data (Smith et al. 2005).

This project sought to find additional groundwater monitoring data in gap areas identified by Lindsay (2004) and Smith et al. (2005) and add these to the WIN database if of sufficient quality. It also commissioned additional monitoring sites using existing boreholes and installed additional monitoring sites where required.

Avon Upper Swan Nutrient Intervention and Salinity Amelioration Project

The Avon Upper Swan Nutrient Intervention and Salinity Amelioration Project (AUS-NISAP) was an extension of the work initiated through the Ellen Brockman Integrated Catchment Management Group (EBICG). By working with landholders, Local Government, State agencies and community, behavioural change to effect reduction in transport of nutrient to waterways and to reduce the amount of land affected by salinity has been promoted. Activities have focused on addressing the salinity, land management, biodiversity and water quality issues in the north and north east of the Perth Region.

The Ellen Brook is a priority catchment in the Swan-Canning river system, contributing more phosphorus by load than any of the other 30 sub-catchments.

Catchment management activities such as fencing of streamlines has contributed to the stabilisation of the nutrient load over the past few years. Strategic catchment management activities have also been successful in the Brockman River, which has experienced salinisation and other problems associated with a rising water table in the upper catchment.

Canning Environmental Flows

This project addressed the significantly reduced flow in the Canning, Wungong and Southern Rivers since the construction of drinking water supply dams. It sought to improve river flows, water quality, habitat diversity and reduce frequency of algal blooms by developing Environmental Water Provisions (EWP's).

Since the 1940's water has been released to maintain summer flows in the Canning and Wungong Rivers from the Water Corporation's scheme water supply pipelines. These releases of water were to provide for irrigation, domestic and stock water requirements. Water releases also occur in Wungong Brook, and commenced when construction of the Wungong Dam was completed in 1979. Whilst these releases have ensured sufficient flows to accommodate for water users, further work was needed to understand the amount of flows required and the timing of releases to ensure ecological needs are satisfied at crucial periods.

Through a combination of desktop studies, computer modelling, field trials and monitoring, environmental water provisions were identified. These will form part of the Department of Waters Allocation Plan for the Canning River.



Integrated Water Management Program

Wetland Watch

It has been estimated that 70-80 per cent of wetlands on the Swan Coastal Plain have been either lost or seriously degraded due to filling, draining or clearing since European settlement. Of those wetlands that remain, only 15 per cent are considered to retain high conservation values. These remaining wetlands are under significant threat from urban and rural encroachment. Many of these high value wetlands are located on private property and are outside of current protective measures such as Environmental Protection Policies and the Bush Forever scheme.

A significant threat to these wetlands is a lack of awareness, on the part of landowners and the general community, of the presence of many seasonal wetland types and the high biodiversity value of these systems. Another equally significant threat is insufficient capacity of landowners for wetland management. Given many of the remaining wetlands on the Swan Coastal Plain are located on private land, their sustainable management and conservation is in the hands of individual landowners.

The Wetland Watch project, delivered through WWF Australia, worked directly with land owners to improve the management and secure conservation of high value wetlands. This was achieved by

providing learning opportunities for landholders, providing assistance with the development of land management plans and through the provision of funds to assist with such activities as revegetation, weeds control and fencing.

Sustainable Landscaping Project

The increased frequency of algal blooms in the Swan-Canning river system as well as the climate induced water restrictions has highlighted the need for Perth to explore landscaping practices with low nutrient and water requirements. The Sustainable Landscaping Strategy project has been developed by the North Metro Catchment Group in conjunction with the Eastern Metropolitan Regional Council and the Claisebrook Catchment Group.

The project focused on opportunities for Local Governments (LGs) to promote the use of plants with low water and fertiliser requirements within both the residential and commercial communities. A component of the project included a series of brochures that have been developed based on soil types and customised to suit a particular LG area. The brochures feature advice on plant selection, care and maintenance as well as garden design tips. Local Government were also assisted with the development of demonstration gardens to promote local plants within the community.



It has been estimated that 70-80 per cent of wetlands on the Swan Coastal Plain have been either lost or seriously degraded

Ribbons of Blue/Waterwatch WA

Ribbons of Blue/Waterwatch WA (RoB) in the Perth Region is an environmental education and community environmental water monitoring program that raises awareness and understanding, provides educational opportunities, develops skills, and encourages behaviour change in a whole of catchment context.

RoB aims to encourage local communities to be actively involved in learning about and protecting environmental water quality, and to share responsibility for the management of our waterways (rivers and streams), wetlands, groundwater and stormwater systems.

Ribbons of Blue Coordinators have trained and provided support to stakeholders, provided technical expertise during fieldwork and facilitating awareness through a variety of environmental activities. They have assisted teachers and other educators (Scout, Guide and CALM Bushranger leaders) to plan on-going education and water quality monitoring programs, connecting fieldwork and other learning experiences to the Curriculum Framework, and linking these groups to the wider community for on-ground remedial action. Community groups have also been assisted with the planning and implementation of long term water quality monitoring and evaluation programs.



Natural Diversity Program

Land in urban areas and on the fringe of urban development has similar biodiversity conservation issues to those of the rural landscapes, but with additional pressure and less flexibility within the local landscape. This type of land occurs extensively around the Perth Metropolitan Region. Because of its proximity to centralised areas, the land has development potential and consequently increased economic value. These urban fringe areas have retained significant biodiversity values.

Furthermore, established urban areas often have small remnants of habitat, which are highly valued by the local community. The biodiversity values remaining in these areas can be particularly important for providing unique examples of pre-existing flora and fauna, for protecting sites of biological significance and as seed sources for revegetation with indigenous species. Importantly, those areas provide local and other urban dwellers with a direct link to the natural heritage of a locale, contributing to a sense of place in urban environments. They can also provide a stepping stone opportunity for mobile species to actually move across the landscape as required, an example of this is Carnaby's Black Cockatoo.

Many ecological communities in the Perth NRM Region are now highly fragmented as a result of human settlement and activities. Typically, fragmented ecological communities are endangered, not well represented in the conservation estate, and, owing to a lack of large, little-disturbed remnants, offer few future opportunities for conserving remnants within the conventional Park and Reserve System.

Other threatening processes to biodiversity values include habitat loss, invasive flora and fauna, intensive recreation pressures, urban infrastructure projects, and ecologically inappropriate fire regimes.

These areas typically need intensive management to protect them from degradation and are often not well managed due to a lack of expertise, resources and coordination.

Perth Region NRM invested heavily into threat abatement and asset management initiatives over the 2006-2008 Investment Period. Perth Region NRM would like to recognise the hard work and level of professionalism that was illustrated by the dedicated people who delivered the following projects through the Natural Diversity Program. A brief summary of the accomplishments are following.

Perth Biodiversity Project (WA Local Government Association)

This project has focused on assisting those Local Governments undertaking a biodiversity planning process with the preparation of their Local Biodiversity Strategies (LBS). A LBS uses defined objectives and targets to underpin and guide town planning scheme amendments, local planning policies, incentive strategies for private land conservation and improved management of local government land.

Other initiatives include the creation of the Jarrah Forest Reference sites, identified as part of Perth Region Plant Biodiversity project. A series of workshops were held to promote the use of these Reference sites.

The anticipated Natural Area Initial Assessment Databases was populated with data and delivered to all but three Local Governments and 10 Natural Area Management Forums were conducted to share knowledge, experience and best practice techniques amongst a range of stakeholders in the Perth Region.

Urban fringe areas have retained significant biodiversity values

Behaviour Change for Natural Diversity (WA Local Government Association)

This project continued to build on the formal partnerships with five Local Governments and a sub-regional group by funding Local Nature Spot (LNS) Officers. The LNS Officers targeted 15 high conservation reserves with their primary role of implementing community based marketing strategies.

The marketing strategies were developed from an initial survey, which measured attitudes and behaviours of residents to their natural areas. By identifying the real barriers to preferred behaviour, a range of activities were developed. Residents were then surveyed after the implementation to measure how successful these activities were.

Some exciting accomplishments as a result of this Project have occurred. These include evidence of improved conditions at most of the selected reserves, increased budget allocations by the relevant Local Government (eg. the City of Swan approved \$85,000 towards fencing, installation of a gross pollutant trap and a boardwalk to prevent trampling through a Conservation Category Wetland Emu Swamp and additional \$30,000 for Indigenous consultation). In addition, the Project methodology and approach has continued with one of the participating Local Governments and has been used by additional Local Governments to develop a community engagement program in their area. The methodology and results provided guidance to other similar projects (for example the Dieback Communication Project and Edith Cowan University).

Private Landholder Incentives Project (WWF)

All pilot landholder incentive schemes were implemented in partnership with Local Governments. These included working with the City of Cockburn to improve the existing Biodiversity Grants program, holding a workshop for grant recipients and developing Property Management Plans for recipients.

A Draft Incentive Strategy for Private Land Conservation was produced for the City of Swan

High conservation bushland within the Town of Kwinana, which was earmarked for development, was identified and recommended for conservation through use of incentives such as tax relief for land donation.

Property Management Plans were developed for selected landholders in the Shire of Mundaring, and an Information Package was produced to be made available to landholders with bushland.

And finally, a Draft Incentive Strategy for Private Land Conservation was produced for the City of Swan.

This Project generated a number of reports, which have been packaged together and distributed to a range of stakeholders, including all outer metropolitan local governments and the Perth Biodiversity Project.

Threatened Species and Communities (Department of Environment and Conservation)

This project supported an on-going program coordinated by the Department of Environment and Conservation to protect and recover the threatened species and ecological communities of the Perth Region. By successfully planning and implementing the most urgent actions for the recovery of threatened flora and fauna and ecological communities in the Region, the recovery actions mitigated priority threats, such as feral predators, changes to hydrology, reduced population size and lack of knowledge.

Some of the successful accomplishments include the identification of a new Tumulus Spring TEC; Monitoring native bee locations; Monitoring Graceful Sun Moth locations continued and identified a new population outside of the usual range; Survey and opportunistic recording for roosting sites for Baudin's and Red Tailed Black Forest cockatoos occurred; Monitoring of Western Swamp Tortoise populations (extant populations and released animals, and captive animals), and habitat condition continued, and 25 captive bred individuals were released back into the wild.



Natural Diversity Program

Invasive Species (Department of Environment and Conservation)

Baseline information on all environmental weeds in the region was collated and prioritised. Designed to be a living data system, information can be updated as new information comes to light, or new species are found. It is also a useful tool to search for, filter or sort groups of plants (eg. all perennial grasses, low in abundance and distribution, but with high invasiveness and ecological impact). The framework for the "Swan Weeds" database is also completed, with explanations, instructions and protocols for data entry provided.

The preparation of the strategic plans for six priority weed species (white weeping broom, yellow soldier, haas grass, sharp rush, Geraldton carnation weed and arum lily) have been completed, with significant on ground works completed as part of implementing the species strategic plans. This work has been on different tenures in partnership with a range of land managers. Well over 100ha of control work (mainly herbicide spraying and manual removal) has been completed at over 30 sites for yellow soldier, haas grass, sharp rush and Geraldton carnation weed. Much of the control work was for the protection of sites with high conservation value.

Ecological Linkages (University of WA)

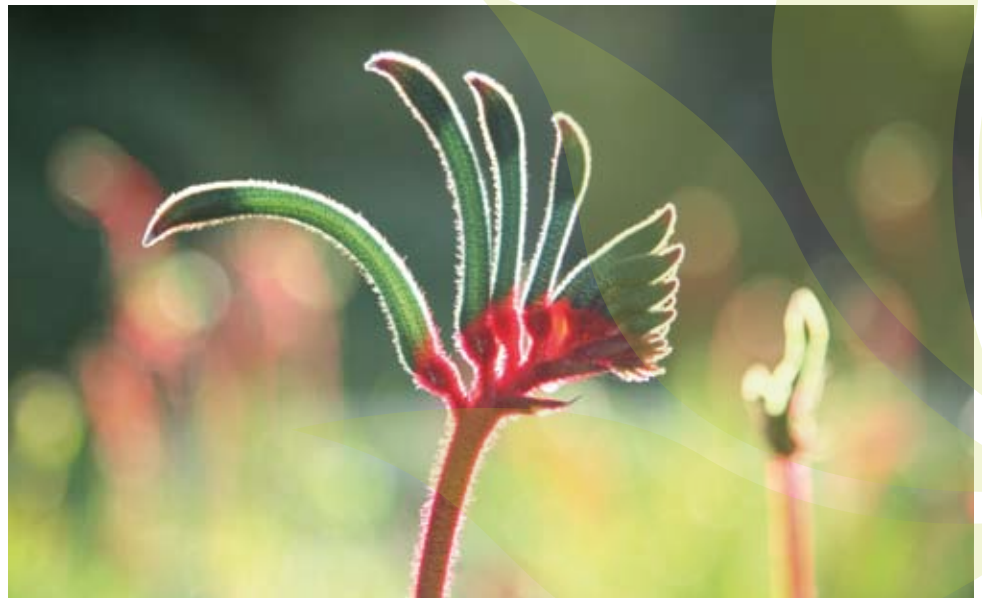
Focusing on bird species, this project has created a set of ecological linkage guidelines in conjunction with scientists, planners and biodiversity managers. A series of workshops, which garnered community and stakeholder input into the design and placement of corridors in three key areas of the Perth region have been held. The outcomes of this process has resulted in an integrative set of guidelines for ecological linkages and the process is underway for facilitating on-ground actions to ensure linkages are created and reserved for the future. Important relationships have been developed and this information is being used to guide other initiatives, such as the Gnanagara Sustainability Strategy and local planning policies with Local Government.

In addition, a number of education tools have been developed and presented to a wide range of audiences, from international conferences to Greater Gardens Workshops.

Skills for Nature Conservation (Greening Australia - WA)

The Skills for Nature Conservation project addressed the capacity of the community to manage, protect and restore natural areas. This was achieved through

The preparation of the strategic plans for six priority weed species have been completed



the delivery of training courses that focused on transferring skills and knowledge to volunteers and NRM professionals who are working to conserve Perth's natural areas including bushland, coastal areas, wetlands and waterways.

A total of 20 workshops were delivered and covered diverse topics for example, managing Cape Tulip and other Morea species to Caring for Country - an Indigenous perspective to NRM.

Biodiversity Action Learning Project (Greening Australia - WA)

The project continued to deliver its action-learning process for land managers covering a number of vegetation types in the Region. The managers of these priority areas conducted the highest priority on-ground management actions on site as part of the active learning program. Training was provided by specialists to address identified knowledge and skill gaps. The learning network then exchanged knowledge and provided mentoring and support.

More than 10 Action Learning events were held over the past 12 months and included activities such as different techniques for fauna surveys. Technical work plans were developed and implemented, and adaptive management trials continued with site monitoring and treatment, particularly those involving weed management.

Stop Dieback the Biological Bulldozer (Dieback Working Group)

The project played a key role in organising the Dieback Information Group Meeting, where 220 delegates heard about the latest research in Phytophthora Dieback and its management. The Project continues to provide training and advice, while lending equipment to all stakeholders and providing mapping and management plans for Local Government.

The Stop Dieback Project, in conjunction with Armadale Primary School, produced the Dieback Education Kit – Winner of the Westpac Landcare Education Award and finalists in both the Biodiversity Conservation and Environmental Education and Communication categories of the 2008 Western Australian Environment Awards.



More than 10
Action Learning events
were held over the
past 12 months

Sustainable Production Program

Light Industry Projects

The Sustainable Production Program has continued to deliver a range of innovative approaches to encourage and assist small and medium enterprises (SMEs) along with agriculture and horticulture based businesses improve their environmental performance. An increasing number of local and state government agencies have contributed as key partners to this program.

Light Industry Risk Assessment

The number of local governments involved in the SME Environmental Risk Assessment project increased to 10, and this project has now achieved over 2,500 legislative assessments across the metropolitan area. A detailed business case was developed and provided to the State Government to consider ongoing long term funding for this project.

Industrial Precinct Improvement Project

The Industrial Precinct Improvement project trialled a range of approaches to encourage and facilitate the adoption of Best Management Practices (BMPs) in over 460 SMEs in two major industrial areas. These approaches have included on-site assessments and assistance, a range of educational materials, trialling of central recycling facilities and specially developed audits targeting the efficient use of resources, mainly energy and water. Follow-up surveys of all businesses will evaluate the success of each of these methods.



Regional Industrial Precinct Improvement Project

Similar Industrial Precinct Improvement projects have been replicated in partnership with regional agencies and have involved over 800 SMEs in the regional centres of Albany, Bunbury, Kalgoorlie and Geraldton. Another project in partnership with Swinburne University has targeted over 400 businesses in the Melbourne area.

All risk assessment and survey data has continued to be collected using Personal Digital Assistants and stored on a secure database hosted by ioGlobal.

Research Studies

Several consultants completed a range of detailed research projects, including an assessment of environmental impacts associated with mobile SMEs, supply chain issues relating to SMEs and evaluating incentives for SMEs to improve their environmental performance. Findings from this research have been used to guide the aims and development of other related projects.

One significant incentive for SMEs to improve their performance is the adoption of 'green purchasing' practices, particularly by the government sector. A national review of initiatives and programs is ongoing to identify key partners and potential collaboration to promote the adoption of green procurement practices.

Sustainability Guidelines for New Industrial Estates

Through a partnership with the City of Gosnells, consultants Cardno BSD were engaged to complete Model Development Guidelines for new industrial estates, based on 'eco-industrial park' principles. Local and state government agencies, particularly the Department of Planning and Infrastructure and Landcorp have been consulted to guide and assist with the development of these guidelines.



SME Air Quality Monitoring Project

A detailed report on air quality across 11 industrial precincts in the region, entitled “Small to Medium Enterprise Air Quality Monitoring Project 2007”, was completed in partnership with the DEC. This project compliments initiatives under the Perth Air Quality Management Plan.

Industrial Stormwater Monitoring Project

A comprehensive stormwater monitoring project was also completed in partnership with the Department of Water. The report developed, “A Snapshot of Contaminants in Stormwater around Industrial Areas of Perth, June 2008”, which highlights a number of serious contaminants found in stormwater draining from light industrial areas and makes recommendations for further monitoring and investigation.

Enhancing Trade Skills

A review of training packages was undertaken at the Industrial Training Institute (formerly the Kwinana Skills Centre) and a basic module on environmental skills and knowledge was developed to be incorporated into the existing package. This environmental training will be implemented and trialled to assess whether it may be an effective opportunity to improve the level of environmental knowledge within SMEs.

Green Advantage Project

A self assessment tool that can be used by SMEs to gauge their environmental performance, the “Business Health Checklist”, was developed in partnership with Edith Cowan University. This checklist was launched and promoted through a series of seminars known as the ‘Green Advantage’ project.

National SME Workshop

In an effort to establish a more consistent approach to managing environmental impacts associated with SME’s in different states and regions across Australia, a workshop was held in Canberra involving key stakeholders from all states. Through recommendations made at the workshop, a National Working Group was formed.

Recycling Services Database

A database of Recycling Services and Waste Contractors in the Perth Region was developed and made available for free on the Perth Region NRM website. The database is updated every six months.

Winery Demonstration Site

An industry specific demonstration site has been established at a typical winery in the Swan Valley. This project will develop baseline data on small winery energy and water use by accurately measuring where and how much energy and water is used in each of the wine production processes. This project will also develop a sustainable production software tool to help producers manage wine production in a more efficient way, while also helping to implement or manage production related issues such as Environmental Management Systems. This information and software has been designed for the whole of site operations and can be transferred and implemented to other wineries.

Rural Land Use

A number of significant projects were completed and final reports presented through the Rural Land Use Program. These included:

- Salinity management for Ellen Brook and Wooroloo catchments.
- Phase one of the “Good Practice Guide” produced for the vegetable industry in partnership with Vegetables WA.
- Production of a ‘Rapid Resource Action Toolkit’, available on-line providing a wide range of scientific data from reliable sources in a user friendly format. This information covers most horticultural crops, agriculture for peri urban areas and some broadacre information.

During this year there has also been considerable expansion of the agricultural projects planned for 2008-2009. Projects which have been submitted by the Rural Land Use Reference Group and endorsed by the Perth Region NRM now cover many more intensive horticulture crops and also include the horse industry, which unwittingly causes considerable damage to the environment.

All of the projects are cross regional and one state wide which is the Horse Industry adoption of Environmental best practice.

This increasing collaboration between NRM regions reduces duplication of effort and optimises resources. Two other NRM regions have contributed funding to Perth Region NRM to provide and deliver projects on their behalf.

In this era of technology transfer Perth Region NRM has become an information hub with numerous organisations, including overseas consulates, approaching us for information.

Coast & Marine Program

The Coastal and Marine Program, which covers the areas of Coastal Vegetation, Marine Habitats and Fauna has had an incredibly successful two years under the NHT2 Program. The projects completed under this Program have provided a solid platform for continuing investment into the future and Perth Region NRM would like to acknowledge and thank the project deliverers for the achievements made.

Marine Indicators Project (Department of Fisheries and Murdoch University)

The marine waters of the Perth Region contain a diverse variety of flora and fauna living in an equally diverse range of habitats. This project was established to determine marine baseline data on the condition of marine habitats and marine flora and fauna, potential impacts and recognised threats, for which there is currently little data. Four studies were funded under this project, with the aim of determining potential key marine indicators.

Classifying shallow water benthic habitats of the Perth Region (Murdoch University)

Knowledge of the marine habitats is important for understanding the broader functioning of the marine environment. One method of acquiring this information is through the production of marine habitat maps, which was the main purpose of this project.

This study was extremely successful in producing a spatially-explicit, high resolution map of the diverse categories of benthic marine habitats



located in the shallow waters of the Perth Region. A Quickbird satellite image was taken of the Swan marine region. The map was then “groundtruthed”, whereby underwater photos were taken at various locations using a drop-camera system, to verify the satellite images. Analysis involved classifying the various benthic habitat types and a GIS database was established to house the habitat map and its information.

Development of a long-term program to monitor coastal communities within the Perth Region (Department of Fisheries)

Two of the most significant threats to the shallow water marine ecosystems within the Perth Region are the impacts from human activities and the effects of climate change.

This study used an ecosystem based management approach to survey key species and their associated habitats, inside and outside “no-take” sanctuary zones at Marmion, Shoalwater Bay and Rottnest Island.

This project was unique in a number of ways. Firstly, the monitoring program designed to examine the effects of sanctuary zones, was a first for this type of work. Secondly, the data was able to be collected before the sanctuary zones were established, providing an additional opportunity to examine the before and after effects of these closed areas. Thirdly, while the use of video and still photography is common for monitoring tropical coral reefs, it has only begun to be utilised for temperate reefs.

The marine waters of the Perth Region contain a diverse variety of flora and fauna

Development of cost-effective indices to monitor the nearshore fish communities of the Perth Region (Department of Fisheries)

The nearshore fish communities of the Perth Region are subject to the combined impact of strong fishing pressure and environmental degradation and the Department of Fisheries (DoF) has been monitoring the annual recruitment levels of 7 key nearshore fish species for the past 10 years. Prior to this study, data for all captured species had been archived but only those data relating to the seven key species had been collated and analysed.

This project examined archived Fisheries data to determine its value in assessing long-term change in abundance of nearshore fish communities of the Perth Region. It also examined the potential to develop a low-cost index of nearshore fish community status in the Perth Region, by expanding the spatial and temporal resolution of the existing DoF recruitment monitoring program.

Cockburn Sound Trawl (Department of Fisheries)

Cockburn Sound, a vitally important ecosystem, has been exposed to pressure from substantial recreational fishing, rapid population growth and urban and industrial development since the 1950's. As a result, the marine fauna have been exposed to ongoing changes in environmental quality. Many of these marine fauna are recreationally important and thus make them excellent indicators for monitoring the impacts of environmental change in these near-shore environments.

This study conducted a number of trawls in Cockburn Sound and used the collected fauna to describe the community structure associated with key indicator species ie blue swimmer crab and pink snapper. The community structure was then assessed for changes in distribution and abundance of these key species by comparison with long term datasets from the Department of Fisheries. Upon completion of this study, a monitoring program has been outlined that will monitor the community composition of sub-tidal embayment fauna, focusing on the key indicator species blue swimmer crab and pink snapper within Cockburn Sound.



Coast & Marine Program

Coastal Planning Incentive Scheme

This scheme was established for land and sea managers to apply for funding to update or develop local Natural Area Management Plans or Threat Abatement Plans. Four coastal local governments and Rottnest Island Authority applied for funding.

City of Cockburn - Coogee Beach Management Plan

Coogee Beach is part of the Woodman Point Regional Park and is one of the few remaining beaches between Fremantle and Rockingham. An increasingly popular attraction, the City of Cockburn recognised the need to develop an individual management plan for the Coogee Beach, with a focus on promoting but also conserving the natural environment.

Town of Kwinana - Kwinana/Rockingham Boundary Foreshore Management Plan

The conservation of two minor pockets of coastal dunes and vegetation in the Kwinana Beach area, were the reason for developing this foreshore management plan. The Town of Kwinana partnered with the City of Rockingham, as part of the coastal area overlapped in the City of Rockingham, and the Department of Planning and Infrastructure. Four offshore headlands were constructed by DPI, to increase sand deposition and retention in the area. The sand for these headlands was supplied by the City of Rockingham and the Town of Kwinana rehabilitated the dunes.

This management plan has identified management techniques, ongoing maintenance requirements, monitoring programs and estimated costs that will ensure the remaining vegetation is preserved and habitat protected.

Cockburn Sound, a vitally important ecosystem, has been exposed to pressure from substantial recreational fishing

Town of Cottesloe - Cottesloe Natural Areas Management Plan

The natural areas of the iconic coastal suburb of Cottesloe are under increasing pressure from intensive human use, demands for development and degradation from erosion, weed invasion and rabbit infestation. The Town of Cottesloe recognised the need to develop an overarching management plan that would address these problems in the longer term.

A strategic plan has been produced that provides an integrated and prioritised approach to managing the natural areas of Cottesloe linked to detailed plans for specific sites. The plan will be used by both the Town of Cottesloe and Cottesloe Coastcare Association.

City of Rockingham – Rockingham Coastal Drainage Study

In recent times, Health Directorate investigations have concluded that the stormwater discharge flowing from stormwater outfalls from Rockingham and Palm Beaches has been the main cause of high bacteria levels and resultant red card classification. As a result, there arose a need to produce a comprehensive plan for the removal of beach stormwater outfalls from these beaches, in an effort to improve water quality and remove the negative impact on flora, fauna and human health.

In the winter of 2007, stormwater was diverted into a holding system while the City of Rockingham completed a study that has evaluated the extent of stormwater catchments within the selected area, estimated water catchment for various storm events and designed systems to prevent and minimise ocean discharge.

Rottnest Island has unique and significantly important natural environment and heritage values

Rottnest Island Authority - Rottnest Island Settlement Vegetation Management Plan

Rottnest Island has unique and significantly important natural environment and heritage values. As development on the island has mostly been contained within the Settlement zone, it is within these areas that vegetation management has been prioritised. Rottnest Island Authority identified the need to coordinate the use and management of non-indigenous trees and shrubs in the settlement area, to identify significant trees and to increase awareness of the value of reintroducing natural trees such as *Melaleuca lanceolata* and *Callitris preissii*.

A management plan has been developed to coordinate vegetation management and dune rehabilitation in settlement areas.

Perth Region Coastal Local Government Rabbit Control Program

Rabbits have long been recognised as a feral pest species within the Perth Region however their complete removal is well beyond the capacity of available techniques and resources. Rabbit control programs are most effective when they include the greatest number of different methods and cooperation between neighbours. The coastal local governments within the Perth Region identified the need for a regional control program as rabbits along the coast have been affecting the success of coastal revegetation programs.

Through the Local Government Coastal Planning Incentive Program, an integrated baiting, fumigation and habitat removal program was carried out in a coordinated approach between the Perth Region coastal local governments. The program resulted in a 92% reduction in rabbit populations over the 2008 summer and autumn.



Coast & Marine Program

Coastcare Program

The Coastcare Program has been a highly effective project as it has provided the framework for delivery of the Coastal and Marine Program to a wide range of stakeholders. Two officers were employed under this project; the North Metropolitan Coastcare Officer worked with stakeholders in the coastal areas from Cottesloe to Wanneroo and the South Metropolitan Coastcare Officer worked with stakeholders in the coastal areas from Fremantle to Rockingham.

This project has had many achievements as follows.

North Coastal Region - There have been collaborative projects undertaken with six local governments and two state government agencies, including rehabilitation activities, natural area planning and education and training. There have been collaborative projects undertaken with nine community groups, including support with project funding applications, project planning, coordination of work, consultation with local government representatives, media coverage and monitoring and evaluation. Capacity building has also been strong within this program, with workshops being held on current issues such as climate change, water management and natural area management planning.

Successful partnerships continue with Woodside and Conservation Volunteers Australia (CVA), and more recently partnerships have been developed with corporate groups such as PriceWaterhouseCoopers, Abel and Mcgrath Real Estate, Woodside and Lion Nathan, to facilitate corporate planting days and project sponsorship.



The Adopt a Beach program, involved work with six school groups and has provided coastal awareness and education activities for school groups. A project has also been developed with Curtin University Coastal Planning students.

There has also been highly successful facilitation of indigenous consultation for local governments and community groups. Working closely with the Coastal and Marine Indigenous Officer has allowed for the implementation of rehabilitation projects in recognised significant sites.

South Coastal Region – Many projects were initiated in the south region. The Coastal Photo Monitoring Project, which involved photographic updates every 6 months at 12 priority sites is now being utilised by Local Governments to assess the progress of relevant coastal foreshore management plans.

There were numerous capacity building activities including field trips, workshops and planting/rehabilitation with 47 community and corporate groups. Overall support and assistance was also provided to all coastal and marine community groups within the south region.

Successful funding agreements to support Coastcare in the south region have also been established with the Kwinana Industries Council, BHP Billiton, Alcoa and Verve Energy. An EnviroFund grant was also secured for rehabilitation activities in four Local Government managed areas.

The Coastcare Program has been a highly effective project



The Adopt a Beach program was also highly successful in the south, with frequent activities undertaken with four school groups.

Coastal Seed Project

This project has seen the successful establishment of a comprehensive local provenance seed collection for use in coastal rehabilitation in the Perth region. APACE facilitated a series of field based seed collection courses in which 10 community groups participated. Coastal local government staff also participated, helping to share knowledge of legislation concerning native seed harvesting. Conservation Volunteers Australia (CVA) also supplied additional teams to assist with seed harvesting and processing. Collected seeds will remain at APACE for future rehabilitation work.

APACE facilitated a series of field based seed collection courses



Indigenous Cultural Heritage Program

The 2007-08 financial year has seen the Indigenous Cultural Heritage Program achieve the targets and objectives outlined in the Perth Region NRM Swan Region NRM strategy with a number of projects continuing to protect and enhance Aboriginal culture and heritage in the Perth Region.

Indigenous Stories Project

Perth Region NRM's Indigenous stories project is continuing to educate the broader community about the Noongar people and their unique connection to country. A third CD, 'The Coming of the Colours' by Noel Nannup has been developed to continue on from the previous two CD's 'The Carers of Everything' and 'When the Sea Level Rose'. In addition the Indigenous Cultural Heritage Unit invested in Marvin, an international multi-award winning training, education and presentation program from the Northern Territory Institute for Community Education and Development (NTICED). As a result NTICED animated the second CD 'When the Sea Level rose'.

Indigenous Cultural Heritage Workshops

Perth Region NRM's Indigenous Cultural Heritage Unit regards community education in its highest esteem. Subsequently a number of Indigenous cultural heritage workshops for State Government Departments, community and Local Governments have been undertaken. These workshops inform and educate a number of stakeholders on Noongar culture and heritage whilst reiterating the importance of protecting and enhancing Aboriginal sites within the Perth Region.

In addition to the CD's and cultural heritage workshops, the Indigenous Cultural Heritage Unit held a Stakeholder Site Tour, funded by the Australian Government, Department of Environment, Water, Heritage and the Arts. The site tour showcased the projects that the Indigenous Cultural Heritage Unit were involved in, the importance of integrating traditional Noongar cultural heritage into mainstream Natural Resource Management (NRM) and the possibilities that can arise from this coordination.

The Perth Region NRM Indigenous NRM Advisory Group

The Indigenous NRM Advisory Group continued to provide strategic advice and direction to the Indigenous Cultural Heritage Unit on the further development of Aboriginal involvement and participation in NRM within the Perth Region. The advisory group provides a forum for the Aboriginal community to advise on current NRM activities and provide comment on current and future projects the Cultural Heritage Unit is involved in.

Indigenous Wetlands Project Officer

In 2007-08 the Indigenous Wetlands project officer continued to work on the Aboriginal Cultural Heritage management Plan with the Perth Airport and support the work that they are conducting with the Local Noongar community. The Indigenous Wetlands Project Officer provided advise and support to a number of Local Governments on the development of Aboriginal Cultural Heritage Management Plans and provided an Aboriginal perspective to wetland management.

Indigenous Coastal and Marine Officer

In 2007-08 Coastwest with the City of Kwinana funded a position for an Indigenous Coastal and Marine Officer. The aim of the Indigenous Coastal and Marine Officer is to develop projects that build partnerships with the 12 Local Government Councils along the coast of the Perth metropolitan area and build solid relationships between the Indigenous community and their Local Government.

Continuing to protect and enhance Aboriginal culture and heritage in the Perth Region

Some of the projects that were conducted in 2007-08 included the Noongar Coastal Trail. The Trail has been developed to highlight and educate the community on Noongar life and culture along the Perth metropolitan coastline.

The coastal trails poster and pamphlet were developed to illustrate the Noongar sites of significance along the Perth metropolitan coastline. The pamphlets and posters aim to educate community groups, organisations and Local Governments along the coastal strip of Perth on the significance of the coastline to Noongar culture and heritage. Noongar elders with connection to specific sites along the coastal strip were consulted to acquire historical Noongar information. Historical information was also collected from records stored at the Batty Library and Landgate.



The Indigenous Coastal and Marine Officer also worked with a number of Local Governments in assisting them in the consultation process with Aboriginal Elders. Some of these projects included the Coastwest funded project to revegetate the sand dunes at City Beach. A nominated Elder assisted the Town of Cambridge in completing a site clearance under the Aboriginal Heritage Act 1972. In addition the City of Cottesloe also worked closely with the Perth Region NRM's Indigenous Coastal and Marine Officer to assist them in a site clearance under the Aboriginal Heritage Act 1972 at Mudurup Rocks.

The Indigenous Coastal and Marine Officer also worked on an Art workshop project with the Kwinana and Rockingham Community to design and develop a Mosaic and Bush Tucker Trail at the Kwinana Beach. Artists and students from Rockingham TAFE were consulted to participate with the development of the artworks.



Local Government Liaison Program

A major focus of the Perth Region NRM's Local Government Reference Group in the past year has been the development of practical tools for Local Government to be full partners in delivering 'Integrated NRM' with the community and the State and Australian governments. It is clear all around Australia that local governments are best placed to work with the community to deliver better management of rivers, streams, wetlands and native vegetation, and to ensure that a wide range of land uses are sustainable and do not cause pollution.

It is also clear that Local Government in the Perth-Metropolitan Region is the largest investor in natural resource and environmental management, with estimated expenditure of around \$270 million annually.

Major initiatives in the year include:

- Substantial development of a Local Government NRM Framework through working with four individual and two regional local governments. The recommendations coming from these case studies will support all Local Governments in the region to be strong partners in leading and delivering integrated NRM. A number of Local Governments have excellent systems in place and they and others will be leaders and champions for better conservation environmental management across the region.
- Strengthening the links between planning, development and NRM has emerged as a major issue for Local Government, typified by problems with managing groundwater, wetlands, streams, vegetation and drainage in new developments. A major study into Integrated Water Cycle Management has been undertaken to clarify and define ways of solving the many problems that occur.

- Early results are showing that a significant issue is the lack of high level governance and decision making in integrating NRM and environmental management into the planning and development process from the beginning. Another problem is the lack of clarity in the roles of the various government agencies in delivering sustainable changes of land use through the planning process. It is hoped that this work, along with other similar work will lead to a restructuring of the planning and development process so that new developments take full account of the environment and are sustainable.

- A pilot Natural Resource Management Program and Project Information System has been completed and presented to heads of government agencies, key Ministers and senior officers in the Departments of Premier and Cabinet and Finance and Treasury. The Pilot shows in summary form the work undertaken by a range of NRM and environment organisations across all programs and projects.

This allows Ministers, senior officers and program and project managers insight into the full extent of the work being done, including all investments and where there are overlaps or duplication. In turn, if implemented, this will markedly improve the effectiveness and efficiency of investment of scarce funding in NRM and environmental management. It is hoped funding will become available to build and implement the full Program and Project Information System.

Local Government in the Perth-Metropolitan Region is the largest investor in natural resource and environmental management

- Work has begun in partnership with the State Government's Shared Land Information Platform to determine the best way for Local Government to access the large amount of NRM and environmental information on various State Government information systems and data bases.
- Another important initiative is the work with the Perth Region NRM's Indigenous Advisory Group to link Aboriginal Culture and Heritage into Local Government strategies, plans and on ground works. This is very important as it is the basis for local Aboriginal people to work on protecting and rehabilitating their special places as part of broader NRM and environmental management. If fully accepted by State and Local Government it could be a key part of practical reconciliation and native title.
- A major step forward during the year was the restructuring of the Perth Region NRM's Sub-regions into formal Reference Groups, jointly chaired by community and local government. All of the local governments in each Sub-region are represented on the Reference Groups and they have become the forum to establish strategic, across region programs and projects. In time this will result in visionary plans to conserve and sustainably manage all of the regions precious natural resources and landscapes, through leadership by local governments and their communities.

The Local Government Reference Group has a vision for the Perth Region NRM to work with all individual and regional local governments that will take several years to come to fruition. When it does, local governments will be working with their communities to deliver on-ground works to protect and conserve the precious natural resources across the landscape. Threatening processes, like rural and other industries will be sustainably managed to provide income while not degrading the environment.

Overall Local Government will be seen as a valued and full partner in the delivery of Integrated NRM, with the State and Australian Governments, the community and industry.



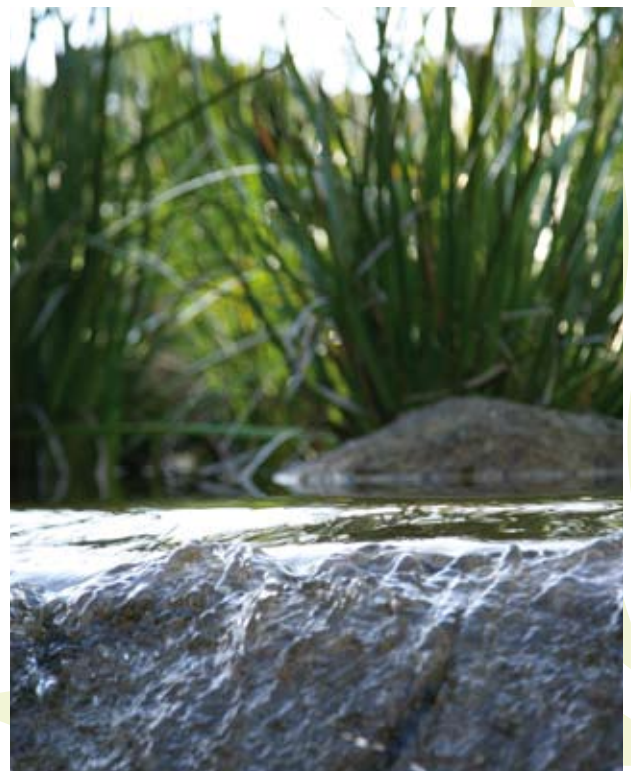
Local Government
will be seen as
a valued and
full partner in
the delivery of
Integrated NRM

Monitoring and Evaluation

Perth Region NRM ran a very successful two day MERI training workshop last year, which was so over-subscribed that we ran a repeat early this year. These workshops developed both our own and our partner's monitoring and evaluation skills, particularly in the development of Program Logic and in evaluation by Performance Story Reporting. It is expected that these two approaches will be an important part of Caring for our Country funding applications and project reporting in the coming years.

To this end, we have now elucidated the program logic which lay behind the thinking of the 'Major Steps', which were developed by our theme-based reference groups and are now a significant part of our strategic planning. Further, at least one of our sub-regions has developed the program logic under-pinning their current and proposed activities.

Also, we were particularly fortunate when the Avon Upper Swan Salinity and Nutrient Management Project was chosen as one of the dozen or so projects for the national trial of the Performance Story Reporting process. This has given many of us, and especially those in the North-East sub-region, experience of this evaluation technique. The exercise was very time and resource intensive, involving a great deal of data collection as well as recording over 100 'most significant change' stories and then sifting through these to recommend the one or two most meaningful stories; however all involved in the work felt that it was a very worthwhile exercise.



Partnerships

The Swan Alcoa Landcare Program

The Swan Alcoa Landcare Program (SALP) provides funds for community groups and local governments working with community groups involved in on-ground revegetation and rehabilitation projects in the Perth Region. The program, established in 1998, has funded more than 718 projects worth over \$4.4 million across the metropolitan area.

In partnership and with support from Alcoa of Australia Limited and the Swan River Trust, Perth Region NRM has managed this successful program since 1997.

Alcoa of Australia Limited has played a vital role in providing more than \$2 million since 1998 and has committed a further \$250,000 providing the community with a secure source of funding until 2009.

The Swan River Trust has supported initiatives to protect the Swan and Canning rivers, and has provided over \$2.4 million to Program recipients since 1999. The Trust has committed a further \$250,000 to SALP in 2008/09 through the Healthy Catchments Program of the Healthy Rivers Action Plan (HRAP).

Funding is available for a wide range of activities in the Perth region addressing the following regional priorities:

- retaining, restoring and managing bushland, coastal, wetland and riverine vegetation; and
- protecting and enhancing the quality of surface water (streams, rivers and wetlands) and groundwater.

To achieve continuous improvement in the Program a reporting process was introduced and information gathered through the reporting process included information on the environmental impact of projects and the partnership contributions leveraged through the Program.

Local Government has also played an important part in supporting local communities with funding or in-kind support and expertise. In 2007 the estimated

funding support and in-kind contributions from Local Government was in excess of \$400,000.

The City of Bayswater was the recipient for the Local Government Recognition Award with an estimated \$246,728 in funding support and in-kind contributions for the Gobba Lake Revegetation Project in 2007. In addition, the City has also contributed further funding to other SALP projects in its jurisdiction.

Without the continued and valued contribution from Volunteers, local "Friends" groups, community members and staff from the sub-regions, Alcoa, Swan River Trust and Perth Region NRM, these on ground projects would not continue. Recognition must go to these wonderful people protecting and enhancing the Perth Region through the Swan Alcoa Landcare Program.



Sub Regional Forums

As foreshadowed in last years annual report, the five sub-regional forums have been formalised into reference groups. These groups meet quarterly, and continue to have representation from both local government authorities and community NRM groups. The community co-chairs are automatically members of the Perth Region NRM Board, and this provides an effective bi-directional information path between the Perth Region NRM and the sub-regions. The local government co-chairs are also invited to participate in Perth Region NRM's Local Government reference group, providing a linkage between all of the sub-regional reference groups and the Local Government

coordinating activities of this important theme-based reference group.

Each sub-regional reference group has developed in their own unique, locally relevant style, whilst working on prioritising the strategic NRM issues in their area. They have also contributed to formal project proposal development, as well as providing a very useful forum for information sharing between and amongst local government authorities and local 'friends-of' community groups.

The five sub-regional forums
have been formalised into
reference groups

2006-2008 Investment Plan

In 2007/2008 Perth Region NRM continued investing into regional and strategic Natural Resource Management programs and projects within the Perth Region, in accordance with the 2006-2008 investment plan. This investment includes millions of dollars from the Australian and State Government Natural Heritage Trust, Corporate sponsorships and partnerships with Local Government Authorities and other not-for-profit organisations.

It is hard to quantify the leverage of additional funds achieved through the Regional process.

There are over 300 community groups contributing volunteer effort in managing natural areas in partnership with Sub-regional Groups, and the 34 Local Governments in the Region are almost all engaged in assisting with one or more projects of the Investment Plan.

In 2007/2008 Perth Region
NRM continued investing
into regional and strategic
Natural Resource



In addition to the confirmed contributions, the following partnerships are in the negotiation stage for 2008 onwards:

- Partnerships with State Government DoW – Waterwise, DEC – Light Industry, DIA – Indigenous Heritage.
- Partnerships with AG Departments – Water and Climate Change, Ausindustry, Regional Development, Office of Small Business, Federal Indigenous Affairs.
- Other AG sources – Coastcare, National Competitive Funding.
- Other state sources – Watercorp, Lottery West, Coastwest.
- Corporate Sponsorship – Alcoa, CSBP, IAG, other.
- Commercial consultancy – light industry, indigenous, agriculture water conservation plans, offsets, sampling and analysis plans.



Achievements

Fishing Line Recovery and Education Project

Discarded fishing line was identified as a major problem after observing wildlife, including pelicans that had been killed or maimed through fishing line entanglement. In the Perth region, during a 10 day field visit by a member of the Australian Seabird Rescue group, 10 pelicans were rescued from fishing line entanglement. During the field survey on the Swan River, five pelicans from a group of 10 were found to be suffering from major injuries including extensive entanglement, disfiguration and limb amputations caused by fishing line and fishing tackle entanglement.

Local research on the extent of fishing line litter was undertaken by the Perth Region NRM's Southern Metropolitan Coastcare Officer through site visits at popular fishing locations and discussions with Local Government Officers from City of Fremantle, City of Cockburn, Town of Kwinana and City of Rockingham.

Through funding provided by the Recreational Fishing Community Grants Program, an initiative of the Department of Agriculture, Fisheries and Forestry, Total Eden and with support from Local Government, the Fishing Line Recovery and Education Project was developed.

The project has provided dedicated Fishing Line Disposal Bins and associated signage to highlight the issue to fishers and the general public and provide a site specific option to overcome the issue. Providing information to schools and the general public on the impact of discarded fishing line on wildlife will complete the cause/effect cycle that will lead to improved community outcomes.



Craig Wilson and Kate Sputore, Coastcare Officers, at the launch of the Fishing Line Recovery and Education Project.

Wildlife, including pelicans that had been killed or maimed through fishing line entanglement

Eco-study launch for wineries

A project which aims to improve the water and energy efficiency of the wine industry in Australia reducing its environmental impact was launched by Perth Region NRM.

Perth Region NRM has been funded by the Federal Government to implement the Resource Efficiency for Smaller Wineries project in an attempt to improve the environmental performance of these small to medium-sized enterprises (SMEs).

Previous research had shown that wineries crushing less than 500 tonnes of grapes per year usually do not have the economies of scale to implement sustainable management practices.

Most wineries in WA and the vast majority throughout Australia crush less than 500 tonnes of grapes which means they fit into the SME category.

It is estimated that to make just one litre of wine, the average small vineyard/winery uses approximately 600 litres of water in the vineyard.

Energy use is also an issue, with small wineries estimated to use about three kilowatts of power to produce one litre of wine.

In partnership with Sittella Wines in the Swan Valley, Perth Region NRM has developed a comprehensive monitoring system and a software package to manage the data from extensive monitoring equipment.

Fertiliser use and nutrient run-off will also be addressed as it is of particular concern in the Swan Valley due to run-off entering the Swan River.

Monitoring of the water and energy use at Sittella Wines, which is a typical winery that has an onsite restaurant, cellar door and winery, will take place over the next two years to establish baseline data.

Mr Pekin Project Officer, said small winery resource use had never been quantified and the information gained would be used to develop a model that could be implemented by all Australian wineries to reduce the amount of water, energy and fertilisers used.

The winemaker at Sittella Wines, Matt Bowness, said: "From what I have seen so far I am really looking forward to using the software package as it has been designed to help winemakers like myself to manage all aspects to our production more efficiently."



Sittella Owners Mrs and Mr Berns Colin Heinzman Perth Region NRM Chairperson and Matt Bowness of Sittella winery at the launch of the project.

Aboriginal Cultural Heritage Management Plan Template

The Aboriginal Cultural Heritage Management Plan Template (ACHMPT) was designed on behalf of the Perth Region NRM's Cultural Heritage Program. The aim of the ACHMPT is to provide a direction for the protection and enhancement of Aboriginal culture and heritage in the Perth Region.

The ACHMPT offers step by step guidelines for Local Governments and stakeholders alike. It presents Local Governments and stakeholders with a better understanding on how to develop the skills and knowledge required to protect and conserve Aboriginal cultural heritage.

The Plan should be utilised when developing projects and management plans that aim to engage Aboriginal people and incorporate their traditional knowledge as part of the planning, implementation and operations processes.

The Aboriginal Cultural Heritage Management Plan consists of the following chapters:

1. Getting started: planning your approach and identifying your organisations roles and responsibilities

2. What are your Aboriginal Heritage places?
3. Developing an Aboriginal cultural heritage study
4. Identifying an complying with legislative requirements
5. Managing your Aboriginal cultural heritage places: strategic and statutory planning
6. Adopting better practice
7. Action Planning
8. Implementation and Monitoring

The document also provides a large number of resources to facilitate the implementation of the plan and case studies of successful work.

The ACHMPT has been implemented by Westralia Airports and they have worked closely with Perth Region NRM's Indigenous NRM Coordinator on refining and further developing the Plan before its release to Local Governments in the Perth Region in the second half of 2008.

NRM Success Stories

Perth Region NRM held a free two day workshop at Sandalford Estate in Middle Swan, showcasing our achievements in Natural Resource Management, as well as delivering the annual presentation to stakeholders.

The NRM Success Stories forum provided an opportunity for project deliverers to share their progress and achievements with our NRM stakeholders, across all of the Programs Perth Region NRM facilitates. From promoting sustainability in industry and agriculture, maintaining the health of our groundwater and reviving Indigenous cultural connections with the region, there was something for everyone at this exciting event.



SALP funding ceremony 2008

More than \$600,000 in funding to care for the Western Australian environment was received by 22 community environmental groups at the Swan Alcoa Landcare Program (SALP) 2008 February funding ceremony held at Kings Park. The 2008 SALP funding assisted community groups to undertake 41 on-ground projects within the Swan Region.

The Environment Minister David Templeman was present at the Ceremony to present recipients with their cheques and he praised the selfless efforts of the community groups for their dedication to helping the environment. The Minister said the State Government had committed more than \$2.4 million during the past 10 years to SALP projects.

"These projects are valuable investments in the Swan River which continue to pay dividends to the public," Mr Templeman said.

"We can only achieve a sustainable and healthy riverine environment if we all work together – local and State governments, industry and community groups.

"SALP is a unique partnership program that empowers the community to provide the much-needed on-ground works to improve river health."

Alcoa's Managing Director, Mr Alan Cransberg, also attended and commended the hundreds of SALP volunteers who take time out of their busy lives to protect Western Australia's rivers and make a difference through rehabilitation projects.

"Thanks to Alcoa's own mine rehabilitation commitments, I realise that these projects do not happen overnight and require dedication. The rehabilitation of a self-sustaining and bio-diverse eco-system takes years of hard work, which is why Alcoa's long term support of this program is so important," Mr Cransberg said.

"I am delighted that this year marks a significant milestone for Alcoa in that it's the 10th anniversary of our support, over which time we have contributed \$2.8 million to the program," he said.

Swan River Trust Chairman, Charlie Welker, said the ongoing commitment and efforts of community groups were essential in maintaining and improving the ecological health and community benefit of the Swan and Canning rivers.

"The rivers are showing signs of stress, so it is essential that community groups, volunteers and local and State government agencies work together to address the issues," Mr Welker said.

"SALP projects make a significant contribution to improving the health of the rivers and catchments for now and future generations. The Trust is a proud supporter of the Swan Alcoa Landcare Program, and commends Perth Region NRM on successfully coordinating the project and the community groups for their hard work."

Perth Region NRM Chair, Colin Heinzman said he was also happy to announce the commencement of the 2009 funding round, which he opened at the Funding Ceremony.

Organisations to receive funding under the 2008 round of SALP funding were:

Mundaring & Hills Historical Society \$1,450.00	Canning River Regional Park Volunteers \$3,700.00
Susannah Brook Catchment Group \$19,989.50	Wilson Wetlands Action Group \$13,748.00
Friends of the Blue Wren Reserve \$7,087.00	Bannister Creek Catchment Group \$37,800.00
Helena River Catchment Group \$106,145.00	Friends of Attadale Foreshore \$5,600.00
Friends of Spring Road \$4,800.00	Wandi Landcare Group \$5,740.00
Friends of Boya Trail \$3,718.75	North Metropolitan Conservation Group \$105,428.36
Friends of Piesse Brook \$48,655.00	Friends of Lightning Bushland \$1,445.00
Wooroloo Brook Land Conservation District Committee \$35,700.00	Friends of the Coolbinia Bushland \$2,250.00
Armadale Gosnells Landcare Group \$50,165.00	North Swan Land Conservation District Committee \$12,471.10
Bungadore Park Management Committee \$6,210.00	Chittering Land Conservation District Committee \$34,287.62
Aquinas College Mt Henry Peninsula Conservation Group \$4,994.00	Ellen Brockman Integrated Catchment Group \$115,385.60

Swan NRM Environmental Weed Project

Although rich in biodiversity values, many of the natural areas in the Perth NRM Region are under increasing pressure from a range of threats, including population growth, fragmentation, climate change and weeds.

The two-year Swan Environmental Weed Project (2006-08) aimed at curbing the devastating impacts of environmental weeds by providing a strategic and coordinated approach to management. Delivered by the Department of Environment and Conservation (DEC) in consultation with stakeholders, it aligns the efforts of a multitude of land managers to implement cohesive actions in high priority biodiversity sites and allows a targeted approach for dealing with the greatest weed threats.

The project is cross-tenure and has linkages to a number of other priorities and landscape scale projects, such as the Perth Biodiversity Project Western Australian Local Government Association (WALGA) and Biodiversity Conservation Initiative (DEC).

A major outcome is the collation, assessment and systematic prioritisation of all known environmental weeds in the Region. Over 900 environmental weed taxa were identified, with a large number of these having serious ecological impacts. This process established a baseline for information on environmental weeds and a valuable searchable tool for land managers in the decision-making process.

A database framework was also developed, which will provide an online resource for land managers and the community to access current information on the

Region's most problematic environmental weeds.

A major outcome was development and implementation of individual weed species' strategic plans. Species were carefully chosen and the plans designed in such a way as they could be used as templates for further species plans both within the region and State-wide. Over 200Ha of on-ground actions, including herbicide treatment and conducting control trials, were undertaken throughout the project's life, with emphasis on supporting and facilitating land managers to undertake actions on different tenures.

As one of the first such regional strategic approaches to be developed in Western Australia, it provides a case study and pilot for strategic planning undertaken by other NRM Regions and land management agencies.

If continued, the focus of the work will be building on partnerships with professional and community land managers and activities toward protecting the Region's key biodiversity assets. This work will include survey and mapping, on-ground management of priority populations, monitoring and further control trials to determine best practice management for priority species.

Continued funding would also allow the development and implementation of additional strategic plans for high priority environmental weed species.

The two-year Swan Environmental Weed Project (2006-08) aimed at curbing the devastating impacts of environmental weeds



To the Future



Perth Region NRM is looking forward with excitement to the next four years. The direction for the future and funding available will be clear by the end of 2008, with the allocation from the Australian and State Government decided. The new State Government will be settled, and we will have an opportunity to establish a strong partnership. In addition the Australian Government Business Plan will have been announced, and we will be well advanced in developing competitive projects for submission in January in partnership with our key stakeholders.

Sub-regional Reference Groups are developing strategic plans for each Sub-region, and this will be an important focus for implementation.

Major projects for the next four years will include:

- Development and implementation of the Swan Biodiversity Plan in partnership with DEC and DPI
- Development and implementation of a Dieback Strategy for the Perth Region
- Development and implementation of a Weeds Strategy for the Perth Region
- Recognition for Perth Region NRM as a Recognised Biosecurity Group
- Implementation of Indigenous Cultural Heritage Management Plans with a range of stakeholders
- Further development of the Light Industry Program across the state
- Implementation of the BMP's for Intensive Horticulture across the state
- Finalisation of the marine indicators and identification and development of strategies for key threats
- An integrated coastal strategy for Local Governments to guide rehabilitation and to identify threats from sea level rise
- Further development of a comprehensive water quality monitoring strategy
- Implementation of works on the major tributaries of the Swan-Canning

Governance

Perth Region NRM continues to adhere to good governance practices which is integral to our relationship with the State and Federal Government and all agencies/organisations the Council has contracts/partnerships and agreements with.

In the 2008/09 year the Council will undergo a stringent review of all current policies and procedures to ensure governance issues remains effective. The Council is striving to achieve a "culture" of good governance within its entity and will resist the temptation to merely meet legal requirements.

Audited financial report

For the year ended
30 June 2008

Contents

Committee's Report
Balance Sheet
Notes to the Financial Statements
Statement by Members of the Committee
Independent Audit Report.



Committee's report

Your committee members submit the financial report of the Swan Catchment Council Inc. for the financial year ended 30 June 2008.

Committee Members

The names of committee members throughout the year and at the date of this report are:

Colin Heinzman	Chairman	Bob Humphries	Member
David Boothman	Deputy Chairman	Stuart Knott	Member
John Beaton	Member	Sally Lake	Member
Jamie Bowyer	Member	Beverley Rebbeck	Member
Harriet Davie	Member	Clive Robartson	Member
David Deeley	Member	Alan Sands	Member
David Ellement	Member	David Saunders	Member
Pat Hart	Member	Beth Walker	Member
Robert Hawes	Member	Liz Western	Member

Principal Activities

The principal activities of the association during the financial year were to provide funding coordination of Natural Resource Management (NRM) in the Swan Region.

Significant Changes

No significant change in the nature of these activities occurred during the year.

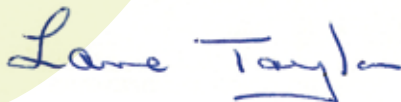
Operating Result

The surplus for the year was \$606,878. Swan Catchment Council Inc. is exempt from income tax.

Signed in accordance with a resolution of the Members of the Committee.



Chairman
Name: Colin Heinzman



External Accountant
Name: Lane P R Taylor, CPA
on behalf of LPR Taylor & Associates Pty. Ltd.

Dated this day of

Balance sheet

as at
30 June 2008

	2008 \$	2007 \$
ASSETS		
Current Assets		
Chequing/Savings		
Bendigo Bank - 11am Account	3,394,168	1,927,164
Bendigo Bank - Cash Management	46,978	192,883
Bendigo Visa 121082374 (Linda)	3,690	518
Bendigo Visa 129673208 (Tony)	4,898	1,229
Bendigo Visa 129673463 (Silvana)	272	792
Petty Cash	300	-
Total Chequing/Savings	3,450,306	2,122,586
Accounts Receivable		
Accounts Receivable	9,725	174,378
Total Accounts Receivable	9,725	174,378
Total Current Assets	3,460,031	2,296,964
Total Assets	3,460,031	2,296,964
LIABILITIES		
Current Liabilities		
Accounts Payable		
Accounts Payable	49,346	3,745
Total Accounts Payable	49,346	3,745
Other Current Liabilities		
Expenses payable	-	9,503
Payroll Liabilities		
PAYG Withholding Payable	36,209	29,617
Superannuation Payable	-	8,493
Payroll Liabilities - Other	-	2,458
Total Payroll Liabilities	36,209	40,568
Program/Project Carryover	2,575,354	2,200,389
Provision for project audit fee	1,515	3,300
Tax Payable		
GST Adjustments	61	1,074
GST Collected	186,906	(1,120,840)
GST Paid	(116,745)	889,336
Tax Payable - Other	-	209,166
Total Tax Payable	70,222	(21,264)
Total Other Current Liabilities	2,683,300	2,232,496
Total Current Liabilities	2,732,646	2,236,241

Balance sheet

as at
30 June 2008

	2008	2007
	\$	\$
Long Term Liabilities		
Employee Annual Leave Provision	91,093	62,256
Employee LSL Entitlements Prov	80,735	49,788
Total Long Term Liabilities	171,828	112,044
Total Liabilities	2,904,474	2,348,285
Net Assets	555,557	(51,321)
EQUITY		
Consolidated Fund	-	232,451
Opening Bal Equity	-	(17,591)
Retained Earnings	(51,321)	(266,181)
Net Income	606,878	-
Total Equity	555,557	(51,321)

Notes to the financial statements

For the year ended 30 June 2008

NOTE 1: STATEMENT OF SIGNIFICANT ACCOUNTING POLICIES

This financial report is a special purpose financial report prepared in order to satisfy the financial reporting requirements of the Associations Incorporation Act (WA). The committee has determined that the association is not a reporting entity.

The financial report has been prepared in accordance with the requirements of the Associations Incorporation Act (WA) and the following Australian Accounting Standards:

AASB 1031 Materiality

AASB 110 Events after the Balance Sheet Date

No other applicable Accounting Standards, Australian Accounting Interpretations or other authoritative pronouncements of the Australian Accounting Standards Board have been applied.

The financial report has been prepared on an accruals basis and is based on historic costs and does not take into account changing money values or, except where specifically stated, current valuations of non-current assets.

The following material accounting policies, which are consistent with the previous period unless otherwise stated, have been adopted in the preparation of this financial report.

a) **Employee Entitlements**

The provisions for employee benefits relates to the amounts expected to be paid for the long service leave, annual leave, wages and salaries resulting from employees' services provided to balance date. All entitlements are calculated at their nominal amounts using remuneration rates and expected to be settled within one year. No allowance has been made for future pay rates and thus discounted present value of future cash outflows due to inherent uncertainty in determining the appropriate valuation rates.

b) **Goods & Services Tax (GST)**

Revenues, expenses and assets are recognised net of the amount of GST, except where the amount of GST incurred is not recoverable from the Australian Taxation Office. In these circumstances, the GST is recognised as part of the cost of acquisition of the asset or as part of an item of the expense. Receivables and payables in the balance sheet are shown inclusive of GST.

NOTE 2: PROGRAM / PROJECT CARRYOVER

The Council is a not-for-profit organisation and its activities do not generate profits or losses. The Program / Project Carryover amount represents the accumulated surplus of funding in excess of expenditure as at 30th June. Council's expectation is that the total program / project carryover will be expended in a future financial year or refunded to funding providers in the event of winding up.

Unspent management income is considered to be earned by the Council and is therefore recognised as income in the profit and loss statement. Management income carryover of \$606,878.19 includes unspent management income from prior years which had previously been recorded as Program/Project carryover.

Statement by members of the committee

The committee has determined that the association is not a reporting entity and that this special purpose financial report should be prepared in accordance with the accounting policies outlined in Note 1 to the financial statements.

In the opinion of the committee the financial report:

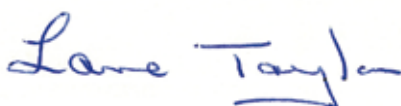
1. Presents a true and fair view of the financial position of Swan Catchment Council Inc. as at 30 June 2008 and its performance for the year ended on that date.
2. At the date of this statement, there are reasonable grounds to believe that Swan Catchment Council Inc. will be able to pay its debts as and when they fall due.

This statement is made in accordance with a resolution of the Committee and is signed for and on behalf of the Committee by:



Chairman

Name: Colin Heinzman



External Accountant

Name: Lane P R Taylor, CPA
on behalf of LPR Taylor & Associates Pty. Ltd.

Dated this day of

Independent Audit Report to the members of Swan Catchment Council Inc.

Report on the Financial Report

We have audited the accompanying financial report, being a special purpose financial report, of Swan Catchment Council Inc., which comprises the balance sheet as at 30 June 2008, and the income statement, a summary of significant accounting policies, other explanatory notes and the statement by members of the committee.

Committee's Responsibility for the Financial Report

The committee of the association is responsible for the preparation and fair presentation of the financial report and have determined that the accounting policies described in Note 1 to the financial statements, which form part of the financial report, are consistent with the financial reporting requirements of the Associations Incorporation Act (WA) and are appropriate to meet the needs of the members. The committee's responsibilities also include establishing and maintaining internal control relevant to the preparation and fair presentation of the financial report that is free from material misstatement, whether due to fraud or error; selecting and applying appropriate accounting policies; and making accounting estimates that are reasonable in the circumstances.

Auditor's Responsibility

Our responsibility is to express an opinion on the financial report based on our audit. No opinion is expressed as to whether the accounting policies used, as described in Note 1, are appropriate to meet the needs of the members. We conducted our audit in accordance with Australian Auditing Standards. These Auditing Standards require that we comply with relevant ethical requirements relating to audit engagements and plan and perform the audit to obtain reasonable assurance whether the financial report is free from material misstatement.

An audit involves performing procedures to obtain audit evidence about the amounts and disclosures in the financial report. The procedures selected depend on the auditor's judgment, including the assessment of the risks of material misstatement of the financial report, whether due to fraud or error. In making those risk assessments, the auditor considers internal control relevant to the entity's preparation and fair presentation of the financial report in order to design audit procedures that are appropriate in the

circumstances, but not for the purpose of expressing an opinion on the effectiveness of the entity's internal control. An audit also includes evaluating the appropriateness of accounting policies used and the reasonableness of accounting estimates made by the committee, as well as evaluating the overall presentation of the financial report.

The financial report has been prepared for distribution to members for the purpose of fulfilling the committee's financial reporting under the Associations Incorporation Act (WA). We disclaim any assumption of responsibility for any reliance on this report or on the financial report to which it relates to any person other than the members, or for any purpose other than that for which it was prepared.

We believe that the audit evidence we have obtained is sufficient and appropriate to provide a basis for our audit opinion.

Independence

In conducting our audit, we have complied with the independence requirements of Australian professional ethical pronouncements.

Auditor's Opinion

In our opinion, the financial report of Swan Catchment Council Inc. presents fairly, in all material respects the financial position of Swan Catchment Council Inc. as of 30 June 2008 and of its financial performance for the year then ended in accordance with the accounting policies described in Note 1 to the financial statements.



BYFIELDS
ASCOT WA Partner



D J WOODRUFF CPA

Date: 29/8/08





Perth Region
NRM

PO Box 2206 Midland WA 6936
Tel: (08) 9374 3333 Fax: (08) 9374 0685
Email: saicc@water.wa.gov.au
www.perthregionnrm.com