



swan catchment
council



2005

infocus



Message from the Chairman.....	2
The Swan Catchment Council.....	3
Membership.....	3
Regional Delivery Programs	3
The Swan Region	5
Achievements	7
Accreditation of the Strategy.....	7
Investment Plan	8
Investment Plan Projects.....	8
Integrated Water Management Regional Delivery Program	8
Natural Diversity Regional Delivery Program.....	10
Sustainable Production Regional Delivery Program.....	13
Coastal and Marine Regional Delivery Program.....	15
Local Government Liaison Program.....	16
Indigenous Liaison Program	17
Swan Alcoa Landcare Program	18
Swan Catchment Centre.....	18
To the Future.....	19
Investment Plan 2006-2008	19
Swan Alcoa Landcare Program	19
Monitoring and Evaluation.....	19



It is with great pleasure that I present this report for the 2005 Annual General Meeting of the Swan Catchment Council.

This has been an exceptional year. The Swan Region Strategy for Natural Resource Management has been accredited - the first of six regional strategies within Western Australia to receive accreditation and the Investment Plan for 2005/2006 was endorsed!

This is the first time that funding through the Australian Government's Natural Heritage Trust to implement a Strategy, approved by the community, will be delivered by an independent, regional coordinating group.

This year has also seen the Swan Catchment Council broaden its membership base to make the Council more representative of the community needs and interests and refined a management structure including redefining sub-regional boundaries to enable Strategy implementation.

It's now time to establish new partnerships with Government, industry and community to better integrate programs, strategies and statutory processes to reach our vision.

I must thank most sincerely all those members of the Council who have given so much of their time and effort to achieve good natural resource outcomes for their communities. Most notably Sue Metcalf who retired as Chair in August 2005. Sue has been a member of the Council from 2001 representing the community in the North East sub-region and now departs to discover the world beyond the Swan region. Sue has been instrumental in building key partnerships, developing the Strategy and Investment Plan and in structuring the Council to be a leader in managing our natural resources.

The Swan Catchment Council also has some exceptional employees. Without these people we would not function. I would formally like to thank all those people for their patience and good humour as we have struggled through a momentous year.

I would also like to thank our corporate partners, Alcoa, Tiwest, Chevron, CSBP who across this land of ours have become good corporate citizens. And of course our sub-regional partners, the many and varied members of our community who with their own hands make a huge difference to our environment.

Finally, a thank you to all of our friends and associates for their help during the year as we look forward to a very productive 2005/2006.

John Herpen
Chairman
Swan Catchment Council



The Swan Catchment Council (the Council) is a community-led regional group with responsibility for coordinating and delivering natural resource management (NRM) in the Swan region.

The Council addresses community needs by working closely with Government agencies, industry and other bodies to promote collaboration on key environmental issues.

The Council aims to improve NRM by:

- better integration of programs, strategies and statutory processes;
- increasing understanding in community, Government and industry;
- influencing Government policy; and
- linking local catchment activities to regional priorities.

Membership

After a review of the Council structure in August 2004, the Council again broadened its membership base to enable it to assume its future role in implementing the Swan Region Strategy for Natural Resource Management (the Strategy).

The eighteen members of the Council are drawn from the community, State and Local Government as depicted in Figure 1.

Council meet seven times per year and is supported by the Management Sub-committee. The Management Sub-committee has representatives from the Council membership and deals with administrative and management issues on behalf of the Council.

The revised membership arrangements will be subject to further review in twelve months time.

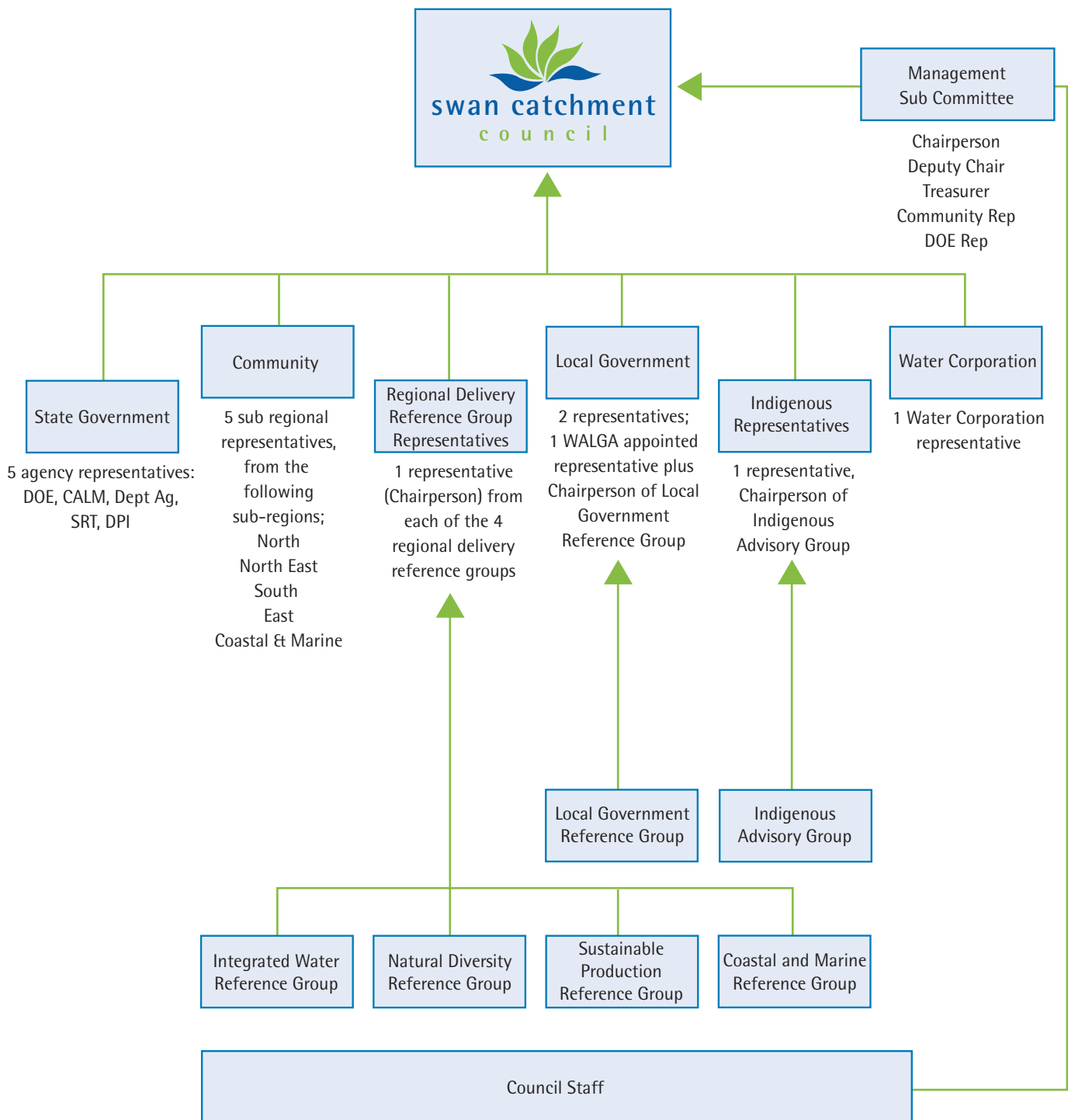
Regional Delivery Programs

The Council endorsed the Regional Delivery Program (RDP) model in 2004, for implementation of the Strategy. The framework comprises the following four main RDP areas:

- Integrated Water Management;
- Natural Diversity;
- Sustainable Production; and
- Coastal and Marine.

The aim of the RDPs is to ensure cooperation and coordination in efforts to achieve the Strategy's objectives. (See Investment Plan projects for more detail).

Each RDP comprises a Reference Group (Chairs sit on Council), Program Manager, officers in each of the sub-regions, as well as partial support from Local Government, Indigenous and Communications Coordinators.



General Manager, Administrative Officer, Executive Support Officer, Strategic Regional Facilitator, Indigenous NRM Coordinator, Local Government Officer, Waterwise on the Farm Coordinator
Regional Delivery Program Managers: Natural Diversity, Integrated Water Management, Sustainable Production and Coastal & Marine

Figure 1 : Swan Catchment Council Organisational Structure adopted 6 April 2005



The Swan region covers over 770,000 hectares of land of which 53 per cent is covered by the Perth Metropolitan Area.

The Swan region is made up of the Swan and Canning river catchments and estuaries, including the Ellen Brook and Brockman River to the north, Wooroloo Brook and the Helena River to the east and Southern River and Wungong Brook to the south. The coastal plain and wetlands north and south of the Swan River estuary and associated urban catchments are also included. It also incorporates estuarine and marine natural resources in State waters to three nautical miles west of the coast and includes islands such as Rottnest.

The region's social and economic life is dominated by the Perth Metropolitan Area. Many NRM issues relate to the increasing demand for land, water, power and food to support a growing population.

The Council has continued to refine the regional and sub-regional boundaries, in preparation for implementing the Strategy. This process resulted in a number of changes highlighted below and depicted in Figure 2:

- North sub-region – now includes the coastal region from the Cities of Joondalup and Wanneroo to North Fremantle. The sub-regional group has renamed to become the North Metro Catchment Group.
- North East sub-region – still covers the Ellen Brook and Brockman River catchments.
- South sub-region – extends from the Canning catchment to the coast south from Fremantle to the City of Rockingham. The sub-regional group formed is the South East Regional Centre for Urban Landcare.
- East sub-region – stills incorporates the Wooroloo Brook and Urban Hills LCDCs and associated catchment groups (Jane Brook, Helena River, Blackadder Woodbridge, Susannah Brook).
- Coastal and Marine sub-region – incorporating Rottnest Island and a range of coastcare groups.



Photo courtesy Rottnest Island Authority



Accreditation of the Strategy

The aim of the Swan Region Strategy for Natural Resource Management (the Strategy) is to ensure that the natural resources of the Swan region will be protected and managed sustainably whilst enhancing the quality of life for present and future generations.

The Strategy formalises the partnership between the wider regional community and Government in managing natural resources at a regional scale. It addresses the following Australian and State Government expectations for accredited strategies:

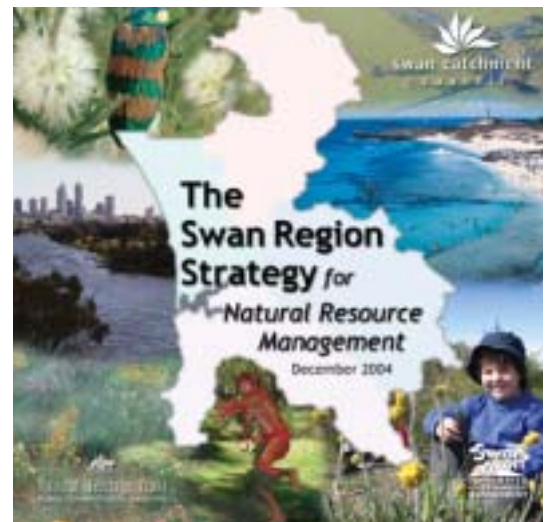
- Recognition of the desired regional NRM outcomes by the Australian and State Government;
- A strategically directed and clearly defined set of prioritised NRM targets;
- Stakeholder participation and ownership of goals and activities;
- Strategic and scientifically based sound investment of Australian and State Government funds;
- An ability to assess progress towards achieving the NRM targets; and
- Increased regional capacity for ongoing adaptive management.

The Council has actively engaged and worked with the wider regional community and key stakeholders to ensure that the standards set through the accreditation criteria have been met.

The Strategy was released for public comment on 7 April 2004. The Council executive and officers collated and analysed over 90 submissions consisting of more than 2000 comments which is presented in an "Analysis of Public Submissions".

A major milestone was met in December 2004 with the revised Strategy receiving Australian and State Government accreditation. This paves the way for more than \$13 million over three years from the Australian Government's Natural Heritage Trust (NHT), matched by the State Government providing in-kind contributions.

This is the first time that NHT funding to implement a Strategy, approved by the community, will be delivered by an independent, regional coordinating group.





Investment Plan

As part of the development of the Strategy, the Council was required to develop an Investment Plan for implementation of the Strategy.

A series of workshops were held in July 2004 for stakeholder input into developing a framework. Workshop A was held to assess the priority assets (land, water, biodiversity, air and cultural heritage) for investment and Workshop B considered management options, partnerships and investment priorities.

The Investment Plan was endorsed by the Australian and State Government in July 2005.

Investment Plan Projects

The Council works together with multiple partners to implement the Strategy. Following is a brief description of current projects being implemented within each of the Regional Delivery Programs:



Photo courtesy Was Hosja

Integrated Water Management Regional Delivery Program

Canning Environmental Flows project, managed by the Department of Environment and funded by the Swan River Trust and Swan Catchment Council, is the first to address the issue of environmental flow allocation on regulated streams in Western Australia. The first outcome will be an environmental flow allocation regime for the Canning River that improves a degraded river system. A second outcome will be that the principles developed will be directly applicable to other near-by streams. It is hoped that they will also be applicable in a more general way to regulated streams throughout the south west of Western Australia.

Swan-Canning Foreshores Assessment project considers human, hydrodynamic and atmospheric influences on the foreshores of the

Swan-Canning estuary and river systems, particularly the physical structure of banks, beaches, flood ways and flood plains, and riparian vegetation communities. Erosion sources are a particular focus. Managed by the Swan River Trust, the most significant outcome of this project is that the results of the study will guide future investment under the Swan River Trust's Riverbank Program.

The **Water Quality Monitoring and Evaluation** project is regarded as a pre-requisite for informed management of aquatic ecosystems throughout the region. Knowledge of the complete water cycle and contaminant flows within the region remains deficient, so science-based evaluation will inform the community of the true state of affairs and lead to more targeted action. This project is managed by the Department of Environment.



Water Education, Training & Technical Support: This project, managed by the Department of Environment with support from the Swan River Trust's Swan Canning Cleanup Program, comprises three parts:

1. Ribbons of Blue/Waterwatch WA - an environmental education program that raises awareness and understanding and develops skills in community water quality monitoring, aimed at professional development for teachers, and community groups such as Bushrangers, Scouts and learning centres.
2. River Restoration project - provides technical support and skill development in surface water protection, management and restoration for action planning and on-ground activities for ecosystem management of rivers estuaries and wetlands to State agencies, Local Government, community groups and landholders.
3. Training in key areas such as groundwater and river restoration aimed at addressing the need for skills and knowledge in surface and groundwater protection, management and restoration in the Swan region for the general community and NRM professionals.

Implementation Framework outcomes are outlined in the sub-regional workplans. A number of projects are summarised here:

- **Catchment Water Quality Monitoring Programs.** Water monitoring programs have been designed and implemented for the Ellen Brook, Bennett Brook and Bayswater catchments. Planning for water quality over the whole of the region is now underway. The programs aim to identify hotspots to allow a more focused and strategic approach to contaminant management. Water quality monitoring activities are supported by State and Local Government and through corporate partnerships.
- **Industrial Contaminant Water Quality Monitoring Programs.** The North Metro Catchment Group (NMCG) are currently working with Joondalup, Wanneroo, Bayswater and Swan Local Governments to identify and manage industrial contaminants that have the potential to discharge into wetland ecosystems. Focus areas are the Wangara, Malaga, Bellevue and Bayswater/Bassendean industrial areas.
- **Integrated Catchment Management Plans.** The NMCG, in partnership with the City of Stirling, is preparing Catchment Management Plans for Herdsman Lake, Lake Gwelup and Carine Lakes. These plans will enable a more strategic approach to the management of these wetlands by addressing factors such as drainage, contaminant sources and landuse planning.
- **Stormwater Management.** Sub-regional groups are involved in projects such as the management of the Liege Street Wetlands and have prepared and are implementing a Stormwater Education Strategy for the WESROC Councils. A future focus will be assisting Local Governments to prepare Stormwater Management Plans in line with the Department of Environment's Stormwater Management Manual.



- **Foreshore Assessments** of Ellen Brook, Brockman and major tributaries. The Ellen Brockman Integrated Catchment Management Group are conducting foreshore assessments of the Ellen Brook and Brockman River and major tributaries. This information will allow the group to better prioritise areas for restoration/rehabilitation works in order to reduce the high concentrations of nutrients being discharged into the Swan River from these sources.

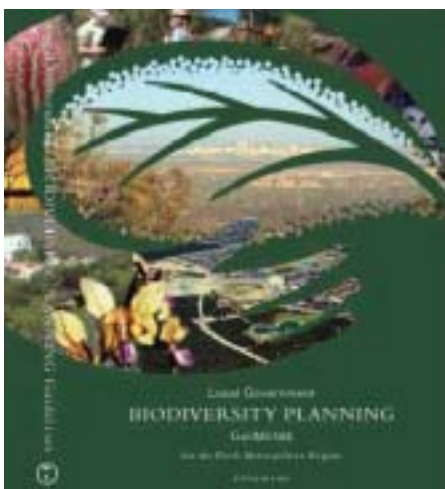


Photo courtesy
Bert & Babs Wells

Natural Diversity Regional Delivery Program

Western Swamp Tortoise recovery plan: The Western Swamp Tortoise is one of the world's most endangered tortoise, with less than 50 mature individuals in existence. This project, managed by the Department of Conservation and Land Management will implement Western Swamp Tortoise Recovery Plans to decrease the chance of extinction by creating at least three wild populations and doubling the total number of individuals.

Recovery action for nine **threatened ecological communities** on the Swan Coastal Plain: The implementation of these Interim Recovery Plans by the Department of Conservation and Land Management will, through improved protection and management of vegetation, prevent further decline in nine critically endangered ecological communities.



Perth Biodiversity Project: Managed by the Western Australian Local Government Association, this project provides Local Government and their partnering community groups with biodiversity planning guidelines, bushland mapping and bushland information templates. This project gives assistance and incentives to Local Government and community groups to use these tools to inform Local Government of decision-making processes.

Stop Phytophthora Dieback, the biological bulldozer builds the capacity of Local Government and the community to address the threat to bushland posed by *Phytophthora* Dieback. Managed by the Dieback Working Group, this project will continue to determine whether *Phytophthora spp* are present within bushland reserves assessed by Local Government under Perth Biodiversity Project, and undertake a mapping and prioritisation schedule for high-value bushland. Management plans will be prepared and an audit process will be developed to monitor adoption and implementation of appropriate management practices. *Phytophthora*-infested reserves will be treated with phosphite. Local Government officers preparing management plans will be mentored and training workshops and awareness-raising activities will be undertaken.



Threatened Flora Recovery project, managed by the Department of Conservation and Land Management, will implement priority recovery actions for the most endangered plant species in the region, including seven critically endangered plant species or those that are at risk of increase in status to Critically Endangered. Recovery actions will also benefit other threatened flora species in the region where they occur with populations of these Critically Endangered species.

Threatened Terrestrial Fauna Recovery project will develop and implement priority actions to preserve endangered fauna species such as Baudin's Black Cockatoos, which will be managed on a landscape scale with co-occurring vulnerable species such as the hills Quokka and Red Tailed Black Cockatoo. Joint recovery plans will be written for the endangered invertebrate species (the Sun Moth and Native Bees) occurring on the Coastal Plain. This project is also managed by the Department of Conservation and Land Management.

Predictive Mapping project will develop a GIS system that will enable a more coherent prediction of what threatened species, ecological communities and biodiversity values may be located in any particular area. Much of the region's remnant vegetation is subject to development, and advice is currently provided by a reactive, fragmented and time consuming approach.

Wetland Watch is a wetland conservation initiative managed by WWF in partnership with key Local Governments to improve the conservation and management of wetlands on private land. By working directly with landowners, the program raises awareness of the presence of wetlands and their values and assists landowners to better manage and protect their wetlands. Both technical and financial assistance is available along with encouragement and support in adopting long-term wetland conservation measures.

Biodiversity Action Learning Program aims to develop an action-learning process, which incorporates the management of priority ecological management sites, covering a number of vegetation types in the region. The managers of these priority areas will then carry out the highest priority on-ground management actions on site as part of the active learning program. The sites will then be used as learning and demonstration sites for NRM professionals and community throughout the region. The learning network will also continue to exchange knowledge and provide mentoring and support to each other, leading to continual improvement of bushland management. The proposed host for the program is Greening Australia.

Skills for Nature Conservation has been running since 1998 and is delivered through a three-way partnership between Greening Australia (WA), Urban Nature (Department of Conservation and Land Management) and the Swan Catchment Centre (Department of Environment). The project also receives funding from the Swan River Trust's Swan-Canning Cleanup Program. This project addresses the capacity of community volunteers to manage, restore and protect the region's natural areas including bushland, coastal areas, wetlands and waterways.



Photo courtesy Emma Adams





Implementation Framework outcomes are outlined in the sub-regional workplans. A number of projects are summarised here:

- **Using Local Plants Strategy:** The "*Using Local Plants Strategy*" focuses on opportunities for Local Governments to promote the use of locally Indigenous plants within both the residential and commercial communities. As part of this project a series of brochures have been developed, based on soil types, which can be tailored to the Local Government conditions. They provide an extensive plant list that details the size, flowering time and colour of species that are widely available from nurseries, as well as other useful information on growing local plants. It was developed by North Metro Catchment Group (NMCG) and is now being taken up by the whole Swan region. The three pilot Local Governments (the Town of Vincent and Cities of Swan and Gosnells) have also implemented other activities from the strategy, including the installation of demonstration gardens. The project is sponsored by the Department of the Premier and Cabinet through its State Water Strategy.
- **Strategic Weed Management:** Ellen Brockman sub-region is spearheading a strategic "whole-of-catchment" approach to weed control with a Weed Information Field Day. Partners include the Shire of Chittering, Departments of Agriculture and community groups. The field day will promote the program by providing a weed identification service, information on weed mapping and management, demonstration of spray equipment and a bridal creeper rust fungus will be available. It will also provide the opportunity for surveying private landholders about their weed needs. This will build on previous weed mapping and priority management on reserves, roadsides and private property.
- **Fish Survey:** A fish survey beginning in Spring 2005 will monitor fish composition and distribution over 29 sites in Bennett Brook, in the North sub-region. Data will be compared with that from the 1998 study on which the project methodology is based. The location of permanent pools will also be ascertained and the study will help investigate the use of fish species as indicators of river health. Partners include Whiteman Park and the Department of Environment.
- **Stepping Stones - Creating Healthy Habitats:** The South sub-region is partnering with Greening Australia, City of Melville and Rio Tinto WA Future Fund in developing a community education program called Stepping Stones. It is designed to encourage schools, urban communities and Local Government to work in partnership to appreciate and preserve the ecological health of their local landscape. It involves working with the community to find new and innovative ways to assist wildlife, particularly birds, to move between patches of good habitat through local neighbourhoods. It seeks to achieve this through increasing community understanding of local biodiversity values and a more strategic and coordinated approach to protecting and enhancing biodiversity values. An 18 month pilot phase of the program is presently being undertaken within the City of Melville with in-kind support from schools and local community groups.
- **Direct seeding trials:** The East sub-region, in partnership with the Shire of Kalamunda, are undertaking seeding trials using a variety of site preparation techniques and direct seeding methods to seed eight different reserves across the Shire.



- **Demonstration sites** – Demonstration sites have been set up throughout the East sub-region to exhibit best practice rehabilitation techniques to the community and others. These have focussed on weed eradication, revegetation, erosion control and river restoration using rock riffles.

Sustainable Production Regional Delivery Program

Small to Medium Enterprises (SMEs) Tracking, Auditing and Benchmarking project: There is a need to register all SME businesses and activities and enable authorised auditors to track tenants. The database would be designed for use by Local Government and provide opportunities to allow dissemination of information. The data produced by this project will be invaluable in targeting appropriate measures to improve overall discharge performance.

SME Industry Emission Study: There is a need to gather data on emissions of SMEs in a collaborative manner. The project aims to collect and analyse data at targeted industrial precincts and provide the information required to develop policy and programs to deal with this issue.

Multi-User Decision Support Tool for Salinity: The Avon-Upper Swan is at risk from increasing salinity, and information about remediation actions is spread over many sources, and is time-consuming to access. There is a need for a simple user-friendly planning tool for use by NRM Officers, community and Local Government. This project will develop this tool on CD-ROM to identify high risk areas and prioritise these areas for remediation. The database can be built with other modules at a later date.

Linking Best Management Practices with Property Planning in Intensive Agriculture: The Swan Catchment Council has been in negotiations with the Vegetable Growers Association and the Department of Agriculture regarding investing in a program that adds value to a current industry funded project promoting best management practice in the vegetable industry.

Implementation Framework outcomes are outlined in the sub-regional workplans. A number of projects are summarised here:

- **Bellevue Sustainable Industry Project:** Businesses in the Bellevue Industrial Estate in the East sub-region will benefit from a project to improve waste management practices and their effects on the environment. The Swan Catchment Council received \$120,000 from the Department of Environment's Waste Management and Recycling Fund to implement this project.
- **Collaborative Planning:** The Council and the South East Regional Centre for Urban Landcare (SERCUL) together with key stakeholders, developed a strategic approach on best management to new industrial precincts.





- **Small-Medium Sized Enterprises (SMEs) Audits:** The North Metro Catchment Group (NMCG) has developed a partnership between the Cities of Joondalup and Wanneroo, targeting the Wangara Industrial precinct, in particular, the motor trades, where point source pollutants drain into the Yellagonga wetland via the stormwater drainage system. This project involves auditing all motor trades for compliance and drainage/storage issues, as well as monthly monitoring of the water and sediment quality within the compensation basin.



SERCUL have undertaken an intensive survey of Local Governments in the south sub-region to review processes and policies when dealing with SMEs. Information gathered will be instrumental in a series of pilot SME audits to be undertaken together with Local Government targeting 'hot spots' in this sub-region.

- **Light Industry Environmental Brochures:** The NMCG received an \$8000 grant from CSBP Limited to develop educational brochures for light industry. Information for light industry in the Swan region is poorly resourced and the production of materials to complement programs is essential for successful implementation of the Swan Strategy.

- **Tonkin/Collier Project:** The NMCG has formed a partnership between City of Bayswater, Water Corporation and local business people directly adjacent to and surrounding the Clune Street stormwater compensation basin. The project aims to enhance the aesthetics of the area with plantings as well as remodelling and replanting of the compensation basin to reduce nutrient export from the basin. The project also includes water and sediment quality monitoring of the basin.
- **WaterWise on the Farm Project:** This project is funded through the Australian Government's National Action Plan and is a partnership between the Council, the Department of Agriculture and the Department of Environment. It aims to encourage irrigating horticulturalists in the North sub-region to adopt sustainable irrigation and nutrient management practices. The project delivers Irrigation Management Training Courses where growers are encouraged to develop Irrigation and Drainage Management Plans; establishes demonstration sites that collect useful irrigation and nutrient management data; increases general community and agricultural industry awareness and understanding of sustainable irrigation and nutrient management practices; and maintains partnerships to support continued water efficiency outcomes.

Coastal and Marine Regional Delivery Program

Beach Health Program: This program, managed by the Department of Environment, with support from the Department of Health and Local Government is undertaking water quality monitoring of stormwater outlets on Perth's beaches. It will establish critical baseline data to assist Local Government prepare stormwater management plans. The project is also assessing impacts of the stormwater.



Ecological Assessment and Management of Coastal Natural Areas project aims to evaluate and identify priority coastal areas in the Swan region that will allow on-ground action to be directed to the appropriate areas. The project is delivered through Greening Australia WA.

Identifying Key Indicators: Through gap analyses, workshops and conceptual modelling this project will identify sensitive or vulnerable species that are critical to, or indicators of, the status of key marine ecosystem components or processes within the Swan region.

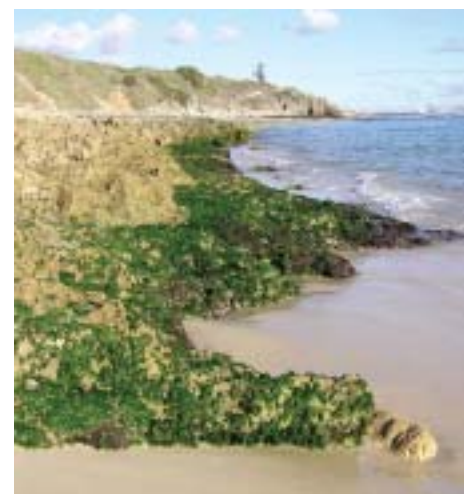
Marine and Coastal Nature Resource Inventory (2004): A consultant compiled a database of marine and coastal information from the Swan region. From the information gaps and deficiencies in the knowledge of particular activities, ecological factors and potential impacts were identified.



Distribution of the Major Marine Fauna Found in the Perth Metropolitan Area (Yanchep to Mandurah) (2005): Poorly documented knowledge on our region's major marine fauna has led to an important undertaking to map their distribution and to understand interactions between our marine wildlife and humans. In order to better manage pressures on our marine fauna, the Department of Conservation and Land Management, has compiled marine wildlife distribution maps for the coastal waters of the Swan region.

Implementation Framework outcomes are outlined in the sub-regional workplans. A number of projects are summarised here:

- **Coastal Biodiversity Plans:** Biodiversity Plans have been developed for the Cottesloe and Cambridge Local Governments with Cities of Joondalup and Stirling in progress.
- **Coastal Planning:** Assistance was provided for the beach user surveys for the Perth Coastal Planning Strategy which is currently in development by the Department for Planning and Infrastructure. The Council is represented on the Steering Committee of the Perth Coastal Planning Strategy.
- **Corporate Care Days and Sponsorship:** Partnerships have been formed with four corporate companies to undertake work along Perth beaches. New corporate partnerships are currently in development.
- **Numerous Marine Groups** are working in the region undertaking monitoring and rehabilitation of near-shore marine habitat and the species they contain. Preliminary work is being done to start a Coral Survey Group in Cockburn Sound, a joint project with the Cockburn Sound Management Council.





Local Government Liaison Program

Local Government is recognised as a major stakeholder in NRM within the Swan region. The Council liaises closely with Local Governments and the Western Australian Local Government Association, as well as a number of regional Local Government organisations, such as the Eastern Metropolitan Regional Council and the Western Suburbs Regional Organisation of Councils. In particular, the Council employs a Local Government NRM Liaison Officer with the aim of linking Local Government planning to the regional outcomes of the Strategy. A number of projects are summarised here:



Example of a Local Government activity map

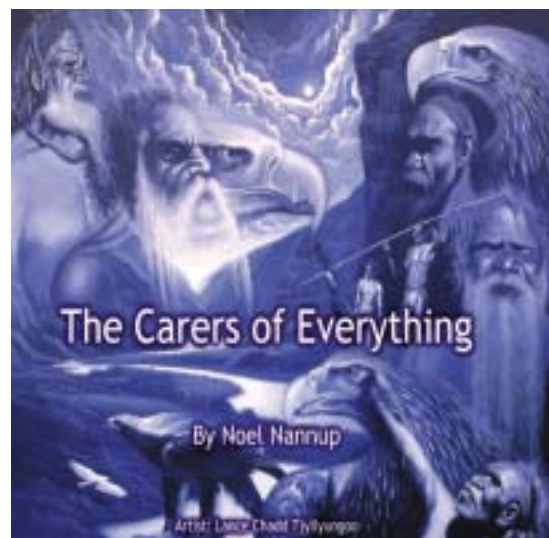
- **Local Government NRM Activity Maps:** An inventory of current Local Government NRM activity in the Swan region has been compiled in consultation with Local Government. The maps provide the baseline information on the current level of activity in the region, providing opportunities for Local Government to share learnings and form partnerships in NRM activities. They are available on the Council website.
- **Identifying links between Local Government NRM activity and existing programs:** An important component is to promote existing NRM programs which will assist Local Government to meet the regional targets.
- **Local Government Voluntary Environmental Reporting Templates:** The Council has commenced compiling a series of voluntary environmental reporting templates that enable Local Government to link their NRM activities to the regional activities.
- **Local Environment Strategy for the City of Stirling.** Prepared by the NMCG, the City of Stirling Local Environment Plan aims to provide a strategy for the management of the natural resources within the City of Stirling.



Indigenous Liaison Program

The Swan Strategy acknowledges that the values, belief systems and traditional practices of Indigenous cultural heritage have been absent in previous management regimes and form the basis of inclusion into future environmental management planning scenarios that produce NRM outcomes.

Consultation with Nyoongar people in the region has been extensive and based on culturally appropriate processes, and in accordance with Australian and State Government best practice guidelines for consultation with Indigenous communities. The Council will continue with its commitment to ongoing engagement with the Nyoongar communities.



A number of projects are summarised here:

- **Nyoongar Stories of Country:** In collaboration with Noel Nannup, the Council produced an audio CD-ROM entitled "*Carers of Everything*", which is narrated by Noel and tells a Nyoongar story of country. "*Carers of Everything*" has been promoted towards the education, art, heritage and tourism sectors. In collaboration with Noel, the Council is currently in the process of producing other CD-ROMs to reflect the many Nyoongar stories. These stories have never been documented and will endeavour to be a major contributor to a better understanding of Nyoongar people of the past and their intimate relationship with the land.
- **Indigenous Landcare Trainee-ships:** In partnership with the Swan River Trust, the Council has been involved in negotiating an Indigenous landcare trainee-ship with multiple stakeholders. The trainee-ships program is aimed at increasing Indigenous employment and participation in NRM activities locally and regionally.
- **Sacred site mapping:** A project to map Aboriginal sites of significance including permanent register, interim register and archived data has commenced. The map also includes Bush Forever and CALM managed reserves. This map will not only assist the Council but also State and Local Government and the sub-regional groups to pinpoint potential project sites that are currently not managed and provides an early indication of where community consultation needs to begin. The map will be updated on an annual basis.



Swan Alcoa Landcare Program



The Swan Alcoa Landcare Program is a partnership of Alcoa World Alumina Australia, the Swan River Trust and the Swan Catchment Council. This successful partnership has been supporting community-based conservation projects for the past seven years.

A record amount of Swan Alcoa Landcare Program funding was available this year due to the Government's announcement to provide an extra \$1.25 million over five years to the Program. Alcoa has played a vital role in committing more than \$1.85 million over eight years to provide the community with a secure source of funding.

Applicants from community groups and Local Governments in partnership with the community were invited to apply for \$550,000 for on-ground revegetation and rehabilitation projects.



More than \$550,000 in landcare funding was received by 44 community environmental groups at a ceremony hosted by the Swan Catchment Council in February 2005 at the Royal Freshwater Bay Yacht Club. This funding will assist community groups to undertake 100 on-ground projects within the Swan region.

Swan Catchment Centre

The Swan Catchment Centre (the Centre) is a regional office of the Department of Environment's Swan Goldfields Agricultural region. The Centre also houses and actively supports the Swan Catchment Council.

The Centre has continued to play a vital role in the development and implementation of the Council's Strategy and Investment Plan and also provides support to the five sub-regional groups in the Swan region by providing advice and training in natural resource management.

Centre staff and its programs provide a link between the Council and its stakeholders. It also plays a significant role in the communication and delivery of Council and Australian Government requirements.

The Centre has traditionally focused its training program for the general public, community group volunteers and private landholders, This year the main focus will be on designing a training program targeted to State and Local Government officers, NRM professionals and industry.

The Centre's education program is supported by the Council and the Swan River Trust's Swan-Canning Cleanup Program.



Investment Plan 2006-2008

The current Investment Plan is for one year. A two year plan for 2006-2008 will be developed by early 2006.

Many of the current projects will be ongoing, but new projects will be developed, led by the Council's Reference Groups.

A partnership approach is fundamental to achieve the outcomes of the Strategy. The Council has already established a number of these throughout the development of the Strategy and is currently formalising these partnerships with written agreements. In addition to these, new partnerships will be developed as the implementation of the Strategy progresses.

Swan Alcoa Landcare Program

In 2005 the Swan Catchment Council will be renegotiating its agreement held with Alcoa World Alumina Australia as Alcoa reaches its last year of committed funding to the Swan Alcoa Landcare Program.

Monitoring and Evaluation

The importance of monitoring and evaluation is to be able to report on the progress of the Strategy. It completes the cycle of adaptive management, to learn from actions taken in the past in order to make future actions more effective. This will mean developing a regional monitoring and evaluation framework.

It will require partnerships with State Government agencies that have statutory responsibility for NRM in Western Australia and who operate the long-term monitoring programs to measure and report on the condition of the State's natural resources.





PO Box 2206 Midland WA 6936
Tel: (08) 9374 3309 Fax: (08) 9374 0685
www.swancatchmentcouncil.org

Printed on 100% recycled paper using vegetable inks.

