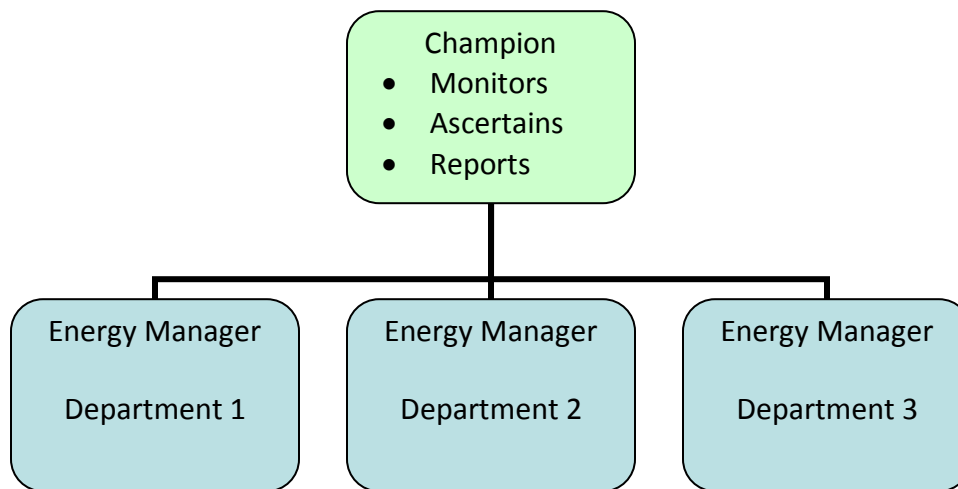


## ***Energy Efficiency Champion – Selection Criteria***

### ***Role of the Champion***

As the head of the Energy Management Team, the Champion is responsible for monitoring the overall energy use at the business. S/he ensures that there are good reasons behind any above-trend energy consumption. S/he reports any unexpected increase in energy use and discuss it with the Energy Managers (from each department) to ascertain the reasons behind it. S/he will report any unwarranted increases, as well as urgent repair requirements, to Top Management without delay or instigate immediate remedial actions.



### ***Selection Criteria***

Position in the business:

- Middle to Upper Management
- Have direct channel of communication to Top Management

Skills & attributes:

- Is passionate about energy efficiency
- Is willing to learn more about energy use and efficiency
- Good communication skills
- Excellent people skills
- Some data analysis skills e.g. ability to interpret trends from graphs
- Is able to dedicate a few hours per month to monitor energy use, meet with Energy Managers and report to top management